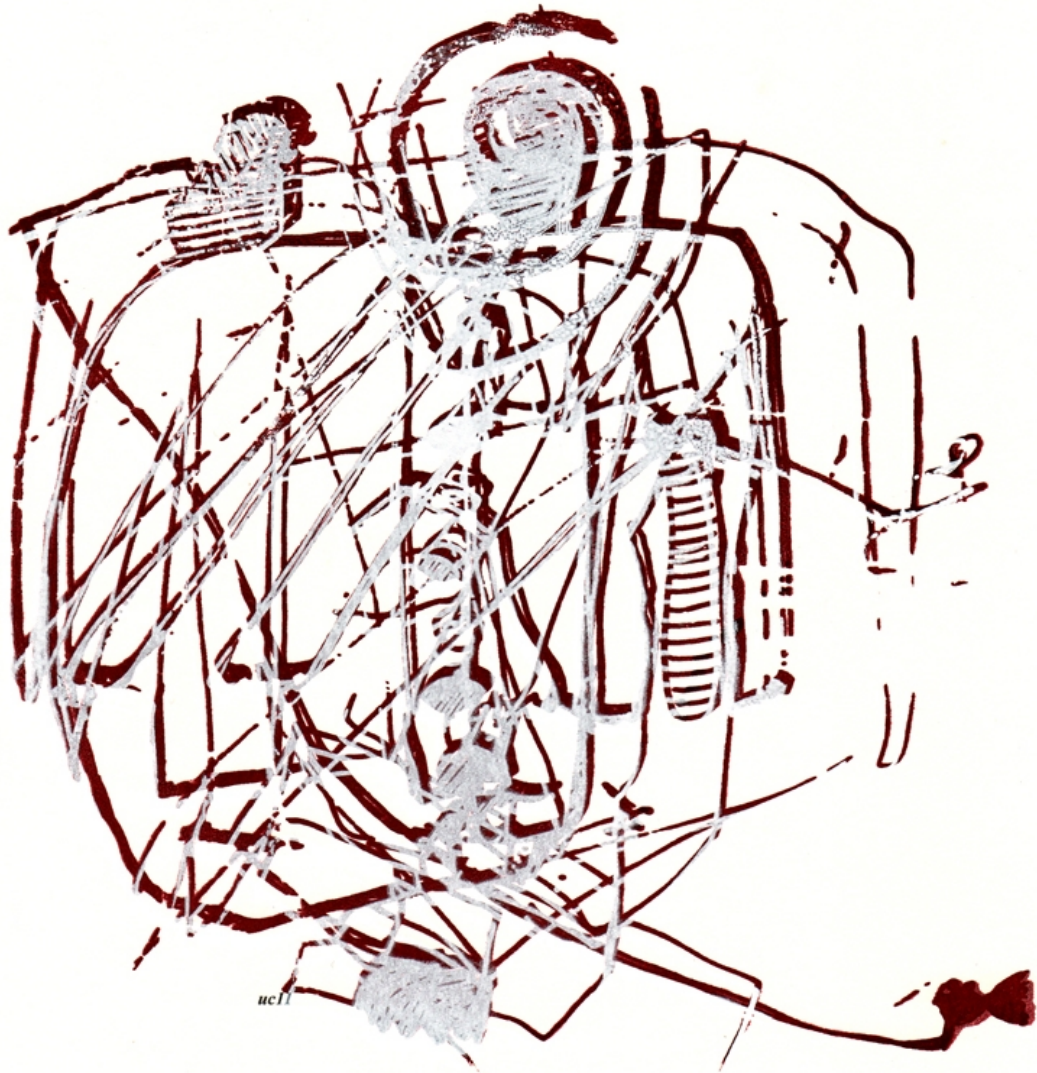


Who is Who *of the BII Alumni*



Bii-at-40

1971-2000-2011

Who is Who of the BII-Alumni

For the Event of BII-at-40, 10th June, 2011

Edited by
Una Chen and Randy Baron

Published by
BII-Alumni-Get-Together
International Senior Professional Institute e.V. (ISPIe.V.)

Coverage: Siebdruck / Screen-print of a sketch on “free association”

Introduction

Friday, 10th June 2011, will be the official 40th anniversary of the Basel Institute for Immunology (BII-at-40), we are organizing various celebration events, including a two-day-symposium on “Immune Responses and Autoimmunity” (www.ispiev.org, under Symposium 2011), public education on “Immunity and Diseases”, a concert, an exhibition, and a dinner party.

A booklet “Who is Who of the BII-Alumni” includes the good wishes of many alumni and friends who come to celebrate the BII-at-40 as well as those who could not attend this event.

The BII was founded and supported by Hoffmann-La Roche and, since its foundation in 1971, had an outstandingly brilliant 30 years history until its closure in 2001. The BII has produced three Nobel Prize winners: Niels Jerne, Georges Köhler (with Cesar Milstein, 1984) and Susumu Tonegawa (1987). It was the “Mecca” of the immunology-scientific community. Several hundreds of scientists passed through the Institute, either as a scientific member, a visiting scientist, or a student. Even today, one third of immunologists of the immunology world, actively contributing to the field of immunology, spent sometime of their life in the BII and in the city of Basel.

Looking back to the BII time and the development of alumni, one finds that in the 30 years of operation, the Institute attracted hundreds of people with very original thinking, free minds and many unique personalities. Many BII members are leaders by nature, most of them are creatively talented in many fields and are still conducting break-through research contributing to knowledge and the welfare of mankind. The spirit of BII continues even after the closing of the Institute; many of the BII alumni are actively involved in creative work **at present** and are transferring the legacy of the BII spirit to the successive generation. Many BII alumni are giants and heroes in the field that they now are actively engaged in.

Through the opportunity of this symposium, we wish to enable the speakers, participants, and supporting organizations to get together in order to reconnect, to discuss and maybe to spark additional collaborations **in the future**.

We are looking forward to your participation in this BII-at-40 event to make it into another unforgettable celebration event.

Una Chen, Ph.D. U.C.Berkeley

on behalf of Organization Committee of BII-at-40 Event
and
Co-editor of Who is Who of the BII-Alumni 2011

For Basel Institute for Immunology 40th anniversary celebration, 9 – 10th June 2011

Even though my stay at the Basel Institute for Immunology (BII) was rather brief, it was highly illuminating and had a major impact on my future career as an immunologist. I was most impressed by the spirit of openness and collegiality of the institute, where I was immediately integrated into the BII's research community. The BII was a leader for many immunologists mostly for two reasons: First, its goal of highest scientific originality, precision, and quality and second, its spirit, which immediately convinced its members to whole-heartedly follow suit. I know that this is an over-simplification but the enormous output of leaders in immunology clearly argues for its success. They say performance depends on attitude and judging from the BII's track record, its overwhelmingly positive attitude is obvious, and the contagiousness of its attitude has succeeded in imprinting a spirit of quality and openness in research to the many students, post-docs and researches who have walked through its doors. I am proud to have been there – to have learned about the art and tools of immunological research – at the most vibrant center of its kind.



Stefan H.E. Kaufmann

Max Planck Institute for Infection Biology, Berlin

President, International Union of Immunological Society

6th April, 2011

Index

Who is Who of the BII-Alumni Coverpage

Introduction

Greetings from President of IUIS

Scientists (ABC Family Name Order) page

Berek Claudia	11
Bogen Bjarne	12
Chen Una	13
Dembic Zlatko	14
Fathman Garry	15
Flajnik Martin	16
Gerson Donald	17
Gisler Roland	18
Günthert Ursula	19
Hamilton John	20
Hansen John	21
Hengartner Hans	22
Heusser Christoph	23
Jacobs Heinz	24
Julius Michael	25
Kapasi Zoher	26
Karasuyama Hejime	27
Kaufman Jim	28
Kaufmann Stefan	29
Kettman Jack	30
Kincade Paul	31
Kisielow Pawel	32
Lamers Marinus	33
Lassila Olli	34
Leanderson Tomas	35
Mackay Charles	36
Marcu Kenneth	37
Mayr Wolfgang	38
Ohnishi Kazuo	39
Pink Richard	40
Ramseier Hansruedy	41
Riesen Walter	42
Sakaguchi Nobuo	43
Salio Mariolina	44
Shulman Marc	45
Sidman Charles	46
Tyndall Alan	47
von Borster Jack	48
Wallny Hans-Joachim	49

Staff

Anquez Viviane	61
Dangy Jean-Pierre	62
Lang Rosmarie	63
Marcuz Anne	64

Students

Borggreffe Tilman	53
Ghia Paolo	54
Jäck Hans-Martin	55
Padovan Elisabetta	56
Schmitz Nicole	57
Ziegler Andreas	58

Scientists



Hochdruck / Highprint

Name: Claudia BEREK, Ph.D.

Current Institution-Affiliation-

Private Address:

Deutsches Rheuma Forschungszentrum, Berlin,
Chariteplatz 1, D-10117 Berlin, Germany

Email:

berek@drfz.de



What is your connection with the BII / The period of time you were in the BII:

Scientific Member May 1977 to September 1982

Some description of yourself to share:

As everybody will agree it was great fun to work at the BII, for me it was also the time when I had to take care of small children. When I came to Basel our son was 10 months and 9 months later our second son was born, but nevertheless, Niels supported and accepted me at the BII and this was quite unusual for the time. It allowed me to continue with science and opened the way for my career.

Name: Bjarne BOGEN, Ph.D.

Current Institution-Affiliation-Private Address:

CoE Centre for Immune Regulation, Institute of [Immunology](#)~~Immunology~~, University of Oslo, Oslo University Hospital, Rikshospitalet, Postboks 4950 Nydalen, 0424 Oslo, Norway

email: bjarne.bogen@medisin.uio.no

What is your connection with the BII / The period of time you were in the BII:

Scientific Member 1985, Visiting Scientist periods in 1986 - 1987

Some description of yourself to share:

During my stay at BII I first worked with Werner Haas on establishing idiotype (Id)-specific CD4+ T cells. Together with Ralph Snodgrass and Zlatko Dembic at BII, and Anton Berns in Amsterdam, we then made Id-specific TCR-transgenic mice. Together with SiggieWeiss at BII we studied antigen processing of Ig, and presentation of Id-peptides on MHC class II molecules. A major finding was that B cells spontaneously process and present their endogenous Ig. Together with Siggie Weiss, Ig-transgenic mice were made. By use of the TCR-transgenic and Ig-transgenic mice the concept of Id-driven T-B collaboration was developed.

Recent work has established that Id-driven T-B collaboration may play a role in autoimmunity and development of B cell lymphomas. In addition, my research group is working on tumor immunology and development of new formats of DNA vaccines.

Currently I am a professor of Immunology at The University of Oslo. In addition, I have a part-time position as senior consultant at Oslo University Hospital. I have had sabbaticals at Stanford University and Harvard University.

Privately, I enjoy family life with wife and three children, skiing, tennis, sailing and outdoor life.

Name: Una CHEN, Ph.D.

Current Institution-Affiliation-

Private Address:

President of
ISPIe.V. (International Senior Professional Institute
e.V. www.ispiev.org) and
RESCUES (Research Experience of Stem Cells in
Europe, www.rescue-society.org)
Grünbergerstrasse 124, D-35394 Giessen, Germany

email:

Una.Chen@gmx.de



What is your connection with the BII / The period of time you were in the BII:

Scientific Member 1986 - 1992

Some description of yourself to share:

Una was born and educated in Taiwan, received her Ph.D. in Immunology at the University of California at Berkeley USA, did a postdoc at the University of Würzburg, Germany, then joined the BII as a scientific member. After the time at the BII she spent one year as group leader at the Max Planck Institute in Erlangen Germany, one year as EC Fellow in Marseille, France, and returned to Germany to form her own group at the University of Giessen. She is interested in both science and the arts, characteristic of many people in the creative fields, spending her time in both and sometimes even more in art than science.

Her scientific work covers molecular immunology and stem cell biology in which she has 50+ scientific publications. At the BII she shifted from mouse B cell molecular biology to mouse ES cells, and developed an efficient way to differentiate mES cells to lymphoid precursor cells in culture. After the time at the BII she focused her work on establishing and characterizing tetracycline/doxycycline responding mouse cell lines from transgenic mESC and transgenic mice brain, lung, and skin tissues. She is interested in the process of making clinical grade cell banks, spent two years working on how to make an affordable GMP grade master cell bank in an academic environment from 2000 to 2002 and she is contributing work to the scientific community. At the BII she served as the co-organizer of the BII-(Alumni)-Get-Together and organized Institute social events on the occasions of the Immunology Congress in Berlin 1989, Budapest 1992, San Francisco 1995, Montreal 1998, Stockholm 2001 and the coming Basel 2011 BII-at-40 events!

Her other community work includes creation and serving as chairperson of the ISSCR (International Society for Stem Cell Research) International Committee from 2002 to 2003, creation and serving as president of RESCUES 2007 to the present, and creation and serving as president of the ISPIe.V., 2009 to the present.

Her artwork includes sketches, paintings, graphics, sculpture and digital art and overall she has produced more than 100 artworks. In addition, she exhibits regularly. She is studying art and has introduced the scientific method to develop new artistic printing techniques. She also applies her artistic imagination to designing laboratories.

Name: Zlatko DEMBIC, M.D., Ph.D.

Current Institution-Affiliation-

Private Address:

Professor, University of Oslo
Editor, Scand J Immunology

Department of Oral Biology
Dental Faculty, University of Oslo
Oslo, Norway

email: zlatko.dembic@odont.uio.no



What is your connection with the BII / The period of time you were in the BII:

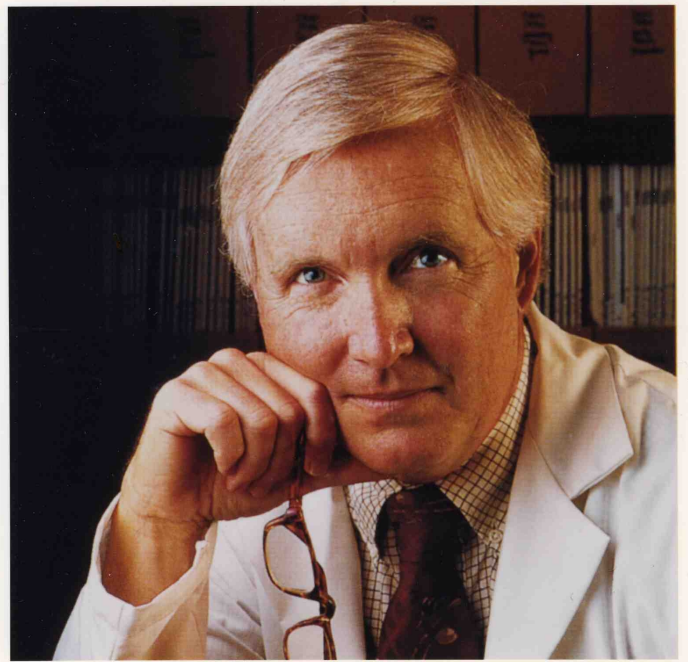
Scientific Member 1984 - 1986

Some description of yourself to share:

Since the earliest days of my lab career I was attracted to molecular and cellular immunology. I wished to understand the function of the immune system, and that is still my wish. During the last twenty years of the past century I've worked on projects in immunology at the Max-Planck-Institute for Biology (Tubingen, Germany), the Basel Institute for Immunology (Switzerland; Switzerland) and the Hoffmann - La Roche AG (Basel, Switzerland) with numerous collaborators. We were the first to report the identification of genes underlying T-cell specificity and recognition (mouse T-cell receptor, in 1986). At Hoffman-La Roche AG, I participated in research on molecular cloning of human cytokine receptors important for the effector phase of immunity such as the interferon-gamma receptor (IFNGR1; in 1988) and the tumor necrosis factor receptor-2 (TNFR2; in 1990). In 1995, I moved to the Institute of Immunology at the University of Oslo, Norway. Since then I broadened my research to include cancer immunology and immunogenetics. All of this would not have been possible without a substantial contribution from my academic collaborators and colleagues in Norway and Croatia. Some of these studies led me to propose a model about the workings of the immune system called the "integrity" model in the mid-nineties. It stresses that immunity is not only a defense system, but also a "selector and caretaker" of potential symbionts and commensals. My publication list has over 80 scientific contributions, with about ten percent published in Nature and Cell. I tend to take these achievements as evidence of the great fun and joy that basic research in immunology has given me over the past years. They are also the source of an unending motivation to study further what remains unknown - a progressively smaller part of human body.

Name:**C. Garrison FATHMAN, M.D.****Current Institution-Affiliation-Private Address:**

Chief, Division of Immunology and Rheumatology, Stanford University School of Medicine
269 Campus Drive, CCSR Room 2225
Stanford, CA 94305-5166, USA

email:cfathman@stanford.edu

What is your connection with the BII / The period of time you were in the BII:
Scientific Member 1975-1977

Some description of yourself to share:

Dr. Fathman is Professor of Medicine and Chief of the Division of Immunology and Rheumatology at Stanford University School of Medicine and Associate Director of the Institute for Immunology, Transplantation and Infection (ITI) and Director of the Center for Clinical Immunology at Stanford (CCIS). He was founder and first-president of the Federation of Clinical Immunology Societies (FOCIS). His substantial scientific contributions in the areas of cellular and molecular immunology have brought him international recognition. As Director of the CCIS, he initiated a multidisciplinary approach to study and treat autoimmune diseases, including rheumatoid arthritis, multiple sclerosis, and insulin-dependent diabetes mellitus, and initiated several new approaches to education and community outreach. Dr. Fathman received his degree from Washington University in St. Louis in 1969. He subsequently completed his residency training at Dartmouth Affiliated Hospitals and completed a fellowship in immunology and rheumatology at Stanford University. He then spent four years doing research, first as a clinical associate at the National Cancer Institute of the NIH, and then as a member of the Basel Institute for Immunology in Switzerland. He returned to the US to join the faculty at the Mayo Clinic Medical School in 1977 and was recruited back to Stanford University in 1981. He is a member of many professional organizations, including the American Association of Immunologists (AAI) and the Association of American Physicians (AAP), and is past council member of the American Society for Clinical Investigation (ASCI) and past-President of the Clinical Immunology Society (CIS). He was Associate Editor of the *Annual Review of Immunology* for 25 years and serves on the editorial boards of numerous scientific journals. Dr. Fathman has chaired a variety of national and international professional meetings, served on NIH study sections and numerous blue ribbon panels and has written more than 300 articles on his research in molecular and cellular characterization of CD4 T cell activation and unresponsiveness.

Name: Martin FLAJNIK, Ph.D.

Institution-Affiliation-

Private Address:

Dept. of Microbiology and Immunology
University of Maryland at Baltimore
Suite 380, 685 West Baltimore Street
Baltimore, MD 21201 USA
Tel.:+1 410-706-5161
Fax:+1410-706-2129

email:

mflajnik@som.umaryland.edu



What is your connection with the BII / The period of time you were in the BII:

Student 1982-83, Scientific Member (postdoc with Louis Du Pasquier), 1983-1988

Some description of yourself to share:

Since leaving Basel I was on the faculty of the University of Miami in Florida (1988-98) and then moved to the University of Maryland, School of Medicine (1998-present). I have been interested in the evolution of adaptive immunity for my entire career.

Name: Donald F. GERSON, Ph.D.



Current Institution-Affiliation-

Private Address:

CEO

PnuVax, Inc. 134 Albert St.

Ontario, K7L3V2, Canada

Tel: +1 613 539 4004,

Fax: +1 613 249 7462

www.pnuvax.com

email: dongerson@pnuVax.com

What is your connection with the BII / The period of time you were in the BII:

Scientific Member 1979-1982

Some description of yourself to share:

Don has produced most of the common vaccines including DTP, BCG, measles, polio, typhoid, rabies, cholera, and has been responsible for the final-stage development and manufacturing of the world's first conjugate vaccines for Haemophilus b, Conjugate, Adult Pneumococcal vaccine, the world's first children's pneumococcal conjugate vaccine (Pneumovax), the world's first meningococcal conjugate vaccine, Measles, both oral and injected polio vaccines, Rabies, Typhoid, Cholera, and a number of pre-clinical and clinical vaccines for HIV, malaria and other diseases. He has designed and constructed many biotech facilities around the world. He has numerous publications and patents in various areas of biotechnology, including biophysics, cell physiology, immunology, biochemical engineering, vaccine development, and biologicals manufacturing.

Recent Publications:

- Gerson, D., 2005. Safety Guides New Syringe Designs. *Pharmaceutical Manufacturing*, 4(4):67-71.
- Gerson, D. F. and Mukherjee, B., 2005. Manufacturing process Development for High-Volume, Low-Cost Vaccines. *BioProcess International* (4):42-48.
- Demain, A.L., Gerson, D.F. and Fang, A. 2005. Effective levels of Tetanus Toxin can be made in a production Medium totally lacking both animal (e.g., brain heart infusion) and dairy proteins or digests (e.g., casein hydrolysates). *Vaccine* 23 (46-47):5420-5423.
- Gerson, D. F., 2008. Paradigm Change in Bio-Manufacturing. *Contract Pharma*, May 2008, p. 64-71.
- Fang, A., Gerson, D F. and Demain, A. L., 2009. Production of *Clostridium difficile* toxin in a production medium totally lacking both animal and dairy proteins or digests. *Proc Nat Acad Sci (USA)* 106(32): 13225–13229.
- Pulendran, B., et al., 2010. Novel Approaches, including Systems Biology, to HIV vaccine research and development: Report from a Global HIV Vaccine Enterprise Working Group. *Nature Proceedings* 4798:2-3.

Name: Roland GISLER, Ph.D.

Current Institution-Affiliation-

Private Address:

Ob dem Hügliacker 15, CH-4102 Binningen,
Switzerland

email:

roland.gisler@intergga.ch



What is your connection with the BII / The period of time you were in the BII:

Permanent Scientific Member and Head of Administration 1989-2003,
also teaching Immunology at the Biocenter of the University of Basel.

Some description of yourself to share:

Hobbies: Astrophysics, travelling, creating multimedia shows on my Mac Book Pro, Rotary, Golf

From December to May I live in Scottsdale, Arizona (8989 N Gainey Center Dr Nr104, Scottsdale, AZ 85258 USA)

Name: Ursula (Ulla) GÜNTHERT, Ph.D.

Institution-Affiliation-

Private Address:

Professor
Institut für Pathologie
Universitätsspital Basel
Schönbeinstrasse 40
CH-4003 Basel, Switzerland

and

Achter Höfe 55
D-29472 Damnatz, Germany
www.kulturtenne-damnatz.de

email:

ursula.guenthert@unibas.ch



What is your connection with the BII / The period of time you were in the BII:

Scientific Member 1991-2001

Some description of yourself to share:

Ursula Günthert obtained her PhD in microbiology at the University of Tübingen, Germany. She did her postdoctoral training at the Max Planck Institute for Molecular Genetics in Berlin where she studied the function of DNA methyltransferases and the effect of DNA methylation on gene regulation. In 1984 she became senior scientist at the Institute for Genetics at the Research Centre Karlsruhe, Germany. Searching for molecules involved in the process of metastasis, she identified the CD44 variant isoforms and their importance for tumor metastasis. She joined the Basel Institute for Immunology as a member in 1991 and obtained her habilitation in 1995 at the University of Munich. After the closure of the Basel Institute for Immunology she moved to the Institute for Medical Microbiology in Basel and in 2001 obtained the lectureship for the Basel University (Umhabilitation) in 2002. From 2007 till 2010 research was continued at the Institute of Pathology, Basel when she received the Titularprofessor for immunology. CD44 remained the main research focus in Ursula Günthert's studies. Her group has investigated the functional implications of CD44 variant isoforms in autoimmunity (mouse models for colitis, experimental autoimmune encephalomyelitis, rheumatoid arthritis), carcinogenesis and haemopoiesis.

At the end of 2010 Ursula retired and in February 2011 moved to North Germany to found the Kulturtenne in Damnatz, her new home: www.kulturtenne-damnatz.de

Name: John HAMILTON, Ph.D.

Current Institution-Affiliation-

Private Address:

Professor
University of Melbourne, Department of Medicine,
The Royal Melbourne Hospital PO, Victoria 3050,
Australia

Private: 6 Aberdeen Street, Aberfeldie, Victoria 3040,
Australia

email:

jahami@unimelb.edu.au



What is your connection with the BII / The period of time you were in the BII:

Scientific Member March 1972 - June 1973 with Jacques Miller

Some description of yourself to share:

Following my Ph.D. studies at the University of Melbourne, and post-doctoral training at the Australian National University and the Walter and Eliza Hall Institute, I worked at the BII and the Ontario Cancer Institute, and for 7 years in New York at Rockefeller University and Sloan-Kettering Cancer Center. I then returned to the University of Melbourne where I was awarded a Doctor of Science Degree (1990), and appointed Professorial Fellow (1993) and Director, Arthritis and Inflammation Research Centre (1997).

In 2001, I became founding CEO of the Cooperative Research Centre for Chronic Inflammatory Diseases, a multinational consortium linking academic institutions and industry. I am a Professorial Fellow and Deputy Head of the Department of Medicine, University of Melbourne, Royal Melbourne Hospital, and a National Health Medical Research Council of Australia Senior Principal Research Fellow.

My major overall research contribution is in cytokine-mediated functions of macrophage lineage cells in inflammation, particularly in arthritis.

Name: John HANSEN, Ph.D.

Current Institution-Affiliation-

Private Address:

Immunology Group Leader
Global Health and Pathobiology
University of Washington
Western Fisheries Research Center
6505 NE 65th Street
Seattle, WA 98115 USA

<http://profile.usgs.gov/jhansen/>

email:

jhansen@usgs.gov
jdh25@uw.edu



What is your connection with the BII / The period of time you were in the BII:

Scientific Member 1995-2000

Some description of yourself to share:

My group focuses on immune responses to infection in fish and the impact of environmental chemicals on immune response potential. In general, our group utilizes both functional genomic and molecular/cellular approaches to investigate the regulation of genes and protein interactions that occur during infection. To better appreciate these interactions; we have also developed specific research projects that utilize zebrafish in addition to our work with *s*Salmon. Zebrafish present an attractive model for studies involving fish and vertebrate health owing to the ease of breeding and maintaining stocks of fish and the availability of specific tools including a finished genome, comprehensive microarrays, gene knockouts/knockdowns and transgenic animals for specific immune-related genes. Current projects using zebrafish include models to assess pathogenesis mediated by *Francisella* species, functional roles of the zebrafish inflammasome and the impact of endocrine disruptors on vertebrate health. These research efforts have translational value for human health as well, as our comparative approach can lead to the identification of key virulence factors and essential components of host immunity that are conserved across all vertebrates. Ultimately, our goal is to better understand how pathogens and host immune responses contribute to pathogenesis &/or immunity and how this information can be applied to vertebrate health.

On a personal side, my family (Brenda & my son Keagen-12 and my daughter Mina-9) have been living in Seattle since 2004 and will likely be here until the end—as the city, people and surrounding areas have all of the features that are important to my family. This includes being surrounded by both the Cascade and Olympic mountain ranges, which are great areas of escape for backcountry camping, hiking, climbing and snowboarding. In addition, the Pacific Ocean and Olympic National Forest are close by and importantly—Seattle is a very livable, liberal city. If you are ever in Seattle, feel free to call on us as our doors are always open to fellow BII alumni.

Name: Hans HENGARTNER, Ph.D.

**Current Institution-Affiliation-
Private Address:**

ETH Zurich and
University of Zurich

Oberrenggstr. 15,
CH-8135 Langnau a./A.
Switzerland

email:

hans.hengartner@usz.ch



**What is your connection with the BII / The period
of time you were in the BII:**

Scientific Member 1975 – 1980

Some description of yourself to share:

Professor Emeritus

Please see PUBMED for publication list.

Name: Christoph HEUSSER, Ph.D.

Current Institution-Affiliation-

Private Address:

Novartis Institutes of Biomedical Research
WSJ-386.11.54,
CH-4002 Basel, Switzerland
Tel: +41-61-3244982

email: christoph.heusser@novartis.com



What is your connection with the BII / The period of time you were in the BII:

Scientific Member 1976 - 1979:

Some description of yourself to share:

Principle Research Investigator at Novartis Institutes of Biomedical Research in Autoimmune Diseases and Transplantation (with contributions to Allergy and Inflammation) specialized in preclinical research of drug intervention strategies by biologicals. - Acting as consultants.

I am looking forward to see all my colleagues from the time at BII

Name: Heinz JACOBS, Ph.D.

Current Institution-Affiliation-Private Address:

The Netherlands Cancer Institute
NKI-AVL
Division Immunology
Plesmanlaan 121
1066 CX Amsterdam
The Netherlands

Schützengraben 25
D-52538 Gangelt
Germany

Bonairestraat 97h
1058 XG Amsterdam
The Netherlands

email: h.jacobs@nki.nl

What is your connection with the BII / The period of time you were in the BII:

Scientific Member February 1997- May 2001

Some description of yourself to share:

Research Interest: Programmed Mutagenesis, Allelic exclusion, Epigenetics

- Study: Biomedical Sciences, Immunology, Biochemistry and Cell Biology, Philipps-University of Marburg, Germany.
- Master thesis 'Molecular and Biochemical Characterization of the Feline MHC', thesis advisor Hidde Ploegh, NKI-AVL, The Netherlands Cancer Institute, The Netherlands.
- PhD thesis 'Control of T Cell Development in TCR Mutant Mice', PhD thesis advisor Anton Berns, The Netherlands Cancer Institute, The Netherlands.
- EMBO Long-term PostDoc Fellow, Institute for Genetics, Department of Klaus Rajewsky University of Cologne, Germany.
- Member, Basel Institute for Immunology, Switzerland.
- University Docent, Research Inst Growth & Development University of Maastricht, The Netherlands.
- Research Group Leader, Div. Immunology, NKI-AVL, The Netherlands Cancer Institute, The Netherlands.

Name: Michael JULIUS, Ph.D.

Current Institution-Affiliation-

Private Address:

Vice President

Research Sunnybrook Health Sciences Centre &
Professor, Departments of Immunology
and Medical Biophysics, Faculty of Medicine
University of Toronto, Canada

Tel.: Direct: +1 (416) 480-4650

Exec Assistant Tel: +1 (416) 480-6100 Ext: 7204

Fax: +1 (416) 480-4351

www.sunnybrook.ca/research

email: michael.julius@sri.utoronto.ca



What is your connection with the BII / The period of time you were in the BII:

Scientific Member 1976-1988

Some description of yourself to share:

Michael received an Honours B.Sc. degree in genetics from McGill University in Montréal, Quebec, and went on to do his doctoral work at Stanford University in Palo Alto, California culminating in a Ph.D. in genetics and immunology. He was recruited as a member of the Basel Institute for Immunology, Switzerland, where he spent 12 years of postdoctoral study analysing the molecular and cellular components of the immune system. In 1988 he assumed an Associate Professorship in the Department of Microbiology and Immunology at McGill University in Montréal, Quebec. Recruited to the position of Professor and Chair of the Department of Immunology at the University of Toronto in 1993, over the next 7 years he stewarded the Department to its ranking as the pre-eminent academic immunology initiative in Canada, externally ranked among the top 10 academic centres of Immunology in North America. His work towards understanding the biochemistry of lymphocyte activation, and the cellular and molecular interactions culminating in protective immunity have supported his continuing interest in autoimmune diseases, and ailments that involve dysregulated function of the immune system. Academic Press, now Elsevier, engaged Michael as the Editor of the highly cited review periodical, *Seminars in Immunology*. In October 2000, Michael assumed the position of Vice President, Research, Sunnybrook Health Sciences Centre, where he stewards a \$100M annual research enterprise [<http://www.sunnybrook.ca/research>]. He has chaired the Canadian Institutes for Health Research review panel for "Immunology and Transplantation", and serves as a member of Scientific Advisory Boards for a number of for profit enterprises. Michael was elected Vice Chair of the Board of Directors of Research Canada in April 2007, and assumed the Chair of Research Canada in May 2008. Research Canada is a not-for-profit, voluntary organization that is a strong national voice for health research advocacy in Canada [<http://www.rc-rc.ca/>].

Please see PUBMED for publication list.

....."You can yell at me if it helps", said Michael, "and big hug to everybody in the BII-at-40 celebration".

Name: Zoher F. KAPASI, Ph.D.

Current Institution-Affiliation-Private Address:

Department of Rehabilitation Medicine
Division of Physical Therapy
Emory University School of Medicine
1462 Clifton Road, N.E
Suite 312
Atlanta, GA 30322 USA
Tel: +1 404-712-5671
Fax: +1 404-712-4130

email: zkapasi@emory.edu

What is your connection with the BII / The period of time you were in the BII:

Visiting Scientist March-August 1992, with Marie Kosco-Vilbois

Some description of yourself to share:

Associate Professor and Director
Division of Physical Therapy
Chief of Outpatient Development

Name: Hajime KARASUYAMA, M.D.

Current Institution-Affiliation-

Private Address:

Department of Immune Regulation
Tokyo Medical and Dental University
Graduate School, 1-5-45 Yushima, Bunkyo-
ku, Tokyo 113-8519, Japan

email:

karasuyama.mbch@tmd.ac.jp



What is your connection with the BII / The period of time you were in the BII:

Scientific Member 1984-1987, 1990-1995

Some description of yourself to share:

I was a BII member twice. People in BII used to call me 'Karas' instead of my first name 'Hajime', because German-pronunciation of 'Hajime' sounds like 'Haime' (or Jaime in Spanish?) not like 'Hi Jimmy!'. During my first stay in BII, I developed an efficient cDNA expression vector pBCMGNeo and its derivatives, and established a series of transfected cell lines secreting high amounts of recombinant cytokines, including IL-2, IL-3, IL-4 and IL-5. I am very happy about that these vectors and cell lines have been distributed to many institutes and universities around the world, and are still utilized by thousands of researchers. In the second stay, I worked on pre-BCR, and demonstrated that the pre-BCR complex is indeed composed of three polypeptides (VpreB, lambda5, and μ H chain) and expressed transiently at the early preB cell stage during B cell development, by establishing triple transfectants and mAbs specific to each component of pre-BCR. After return to Tokyo, I extended my interests to allergy and immunodeficiency in addition to B cell development. Major topics in my laboratory are now basophils and hyper-IgE syndrome (for more detail, please visit our web site: http://www.tmd.ac.jp/med/mbch/top_English.htm).

My wife Reiko and I have two daughters who were two years- and 8 month-old at our first arrival in Basel and used to fluently speak to each other with Swiss German, although they now remember only a few words. We all miss Basel a lot, including Basler Fasnacht.

Name: Jim KAUFMAN, Ph.D.

Institution-Affiliation-Private Address:

Professor of Comparative Immunogenetics

University of Cambridge

Department of Pathology, Tennis Court Road, Cambridge, CB2 1QP UK

and

Department of Veterinary Medicine, Madingley Road, Cambridge, CB3 0ES UK

+44-1223-766423 (office in Pathology)

email: jfk31@cam.ac.uk

What is your connection with the BII / The period of time you were in the BII:

Scientific Member 1981-1995

Some description of yourself to share:

After leaving the BII with Gillian Griffiths, a biting cat, a large map of Basel, a piece of stained glass, a jar of pickled lampreys and a dozen boxes from lab (some of which I have just managed to unpack), we lived out in the wilds of Berkshire in villages dating back to the Doomsday book. Gillian commuted to her swank new institute at University College London, and I ran a Department of Avian Immunology (along with my own lab) at a nearby government establishment called the Institute for Animal Health. After some years, we had been joined by a new cat and two kids named Jonathan (now 14 and taller than I am, not that that is saying much) and Christopher (now 11 and catching up fast), a new job for Gillian (a professor at the very famous Dunn School of Pathology in Oxford) and a debilitating rise up the greasy hierarchy at the IAH for me.

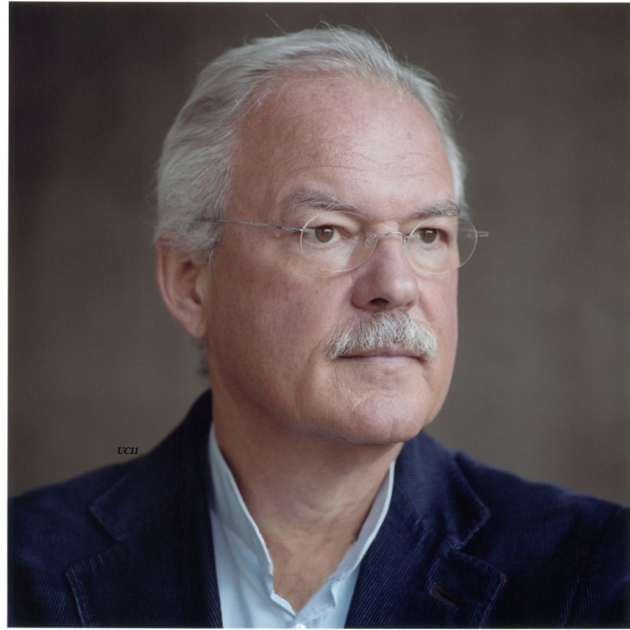
Eventually, it was all too much for me, and we moved to Cambridge, where Jonathan is getting ready for GCSEs at King's School Ely, playing double bass and Real Tennis, rowing and climbing, Christopher is learning French and Latin at King's College School, singing in and touring with the Jesus College choir, and playing flute and piano, Gillian is a Professor at the very swank Cambridge Institute for Medical Research (as well as a highly sought-after Wellcome Trust PRF), and I am the Professor of Comparative Immunogenetics in the Department of Pathology. We live in a big white house in Trumpington, can cycle to work and school, and have just started our vegetable garden for the year.

Name:**Stefan H.E. KAUFMANN, Ph.D.****Current Institution-Affiliation-****Private Address:**

Max Planck Institute for Infection
Biology, Charitéplatz 1, D-10117 Berlin,
Germany

email:

Kaufmann@mpiib-berlin.mpg.de

**What is your connection with the BII / The period of time you were in the BII:**

Visiting Scientist 1981

Some description of yourself to share:

Founding director and director of the Department of Immunology of the Max Planck Institute for Infection Biology in Berlin. Professor for microbiology and immunology at the Charité, Humboldt University, Berlin, and honorary professor at the University Clinics Benjamin Franklin, Free University Berlin. Past president and honorary member of the German Society for Immunology. Past President of the European Federation of Immunological Societies (EFIS). President of the International Union of Immunological Societies (IUIS). Born 1948 in Ludwigshafen am Rhein. Studied biology at the Johannes Gutenberg University of Mainz, 1977 Ph.D. (highest degree, summa cum laude). From 1987 to 1991 professor for medical microbiology and immunology, and from 1991 to 1998 full professor for immunology at the University of Ulm. Scientific interests: immunity to bacterial pathogens with emphasis on tuberculosis and rational vaccine design. Co-Developer of a recombinant BCG-vaccine candidate which has passed phase I-clinical trial successfully. Representative of research and technological health institutes as Alternate Board Member of GAVI Alliance (Global Alliance for Vaccines and Immunization). Initiated the Day of Immunology to raise public awareness in immunology. Numerous scientific awards (e.g. A. Krupp Prize for Young Professors, 1987, Aronson Prize of the state of Berlin 1988, Young Investigator Award (1983) and Investigator Award (1993) of the German Society for Hygiene and Microbiology). Doctor Honoris Causa from Université de la Méditerranée, Aix-Marseille II. Coordinator of several international and interdisciplinary projects including Grand Challenge 6 by the Bill and Melinda Gates Foundation. More than 600 publications mostly in high-ranking journals. Highly cited immunologist (ISI Thomson). Editor or member of editorial boards of more than 20 international scientific journals. Member of various professional societies, e.g. German Society for Immunology, American Academy of Microbiology, Berlin-Brandenburg Academy of Sciences, and German Academy of Natural Sciences 'Leopoldina' and World Innovation Foundation, Honorary Member of the German Society for Immunology.

Name: Jack Kettman, Ph.D.

Current Institution Affiliation

-Private Address:

Professor Emeritus,
University of Texas Southwestern
Med Center,
Dept of Immunology.

Texas Residence: 2828 Hood
street, Res. 1104, Dallas, Texas,
75219 USA

www.jacksbeadtalk.com

email:

jack_kettman@msn.com



What is your connection with the BII / The period of time you were in the BII:

Scientific Member June 1972 – June 1973, Visiting Scientist periods 1979 – 2001.

Some description of yourself to share:

Jack's History; an alphabetic journey.

Plan A: Immunology research. 1966 until 1995 when no longer supportable.

Plan B: Teaching, Coordinator Medical Microbiology Course, Southwestern Medical School, retired 2000.

Plan C: Enterprise.

Founder of Luminex Corporation, 1995, Austin Texas.

Founder, Radix BioSolutions, 2003, Georgetown Texas.

Plan D: Personal research lab, Sebastopol Calif.

Plan E: ?

Name:**Paul KINCADE, Ph.D.****Current Institution-
Affiliation-****Private Address:**

Vice President for
Research
Oklahoma Medical
Research Foundation,
825 N.E. 13th Street,
Oklahoma City, OK
73104, USA

email:

kincade@omrf.org

**What is your
connection with the BII / The period of time you were in the BII:**

Visiting Scientist, six months sabbatical in 1999

Some description of yourself to share:

We continue to explore relationships between hematopoietic stem cells and the immune system. The Program I lead has eight laboratories and I also serve as Vice President for Research in my private not-for-profit research institute. Though not comparable to BII, we do have a \$60M annual budget, a new research tower and 500 employees. There is also an Oklahoma Center for Adult Stem Cell Research, and I am the founding Scientific Director.

Name: Pawel KISIELOW, Ph.D.

Current Institution-Affiliation-

Private Address:

Professor
Institute of Immunology and Experimental
Therapy, 53-114 Wroclaw, ul.
Weigla 12- Poland

Private: 55-040 Bielany Wroclawskie,
ul Dwa Swiaty 23/2b Poland

email:

tatop@mac.com



What is your connection with the BII / The period of time you were in the BII:

Permanent Short Term Visitor 1981; 1984-1985; 1987-1989, Scientific Member 1991- 2001

Some description of yourself to share:

Because over the years I worked at BII several times for different periods of time I had a unique status of a “permanent short term visitor“ as I called it, a position „in between “ officially recognized positions of Permanent Members, Members, visitors and students.

My research concentrated on studying T cell development and selection. Working for most of the time with Harald von Boehmer, who kindly kept inviting me and my students (Wojtek Swat, Leszek Ignatowicz and Arek Miazek) from 1981 to 1991 we had a chance to participate in and to contribute to the studies which provided evidence that immature CD4+8+ thymocytes undergo positive and/or negative selection, as a result of which useful repertoire of self tolerant and self MHC restricted T cell receptors is generated.

Our finding that the specificity of T cell receptor for the class of MHC molecules determines CD4/CD8 phenotype of generated T cells was for me especially pleasing because it threw important light on how CD4 (Ly1+2-) and CD8 (Ly1-2+) T cells, which I identified 13 years earlier (Nature 253: 219, 1975), are born in the thymus.

During may last year at BII, together with my other student Ma gorzata Cebrat, we identified Nwc, a third strongly evolutionarily conserved gene within the Rag locus, which we are now intensively investigating.

Name: Marinus LAMERS, Ph.D.

Current Institution-Affiliation-

Private Address:

Group Leader
Max-Planck-Institut für Immunbiologie
Stübeweg 51
D-79108 Freiburg
Germany

email: Lamers@immunbio.mpg.de



What is your connection with the BII / The period of time you were in the BII:

Scientific Member 1980, with Georges Köhler

Some description of yourself to share:

I am still working in immunology. My last project, before retirement, is an old-time favorite of mine: the immune response to a parasite, i.e. *Schistosoma mansoni*. This worm challenges the immune system at different interfaces and in many ways. It is my last chance to see if I learned anything about the immune system in my life as an immunologist.

And indeed, the worm taught me again something I already knew: the herd instinct of many scientists is phenomenal, they are nothing special in this regard. But apart from that, the worm is also quite clever, in its way: evolution, the second lesson I already knew, is hard to beat. Is there anything new? I do not know, as yet...

Name: Olli LASSILA, M.D.

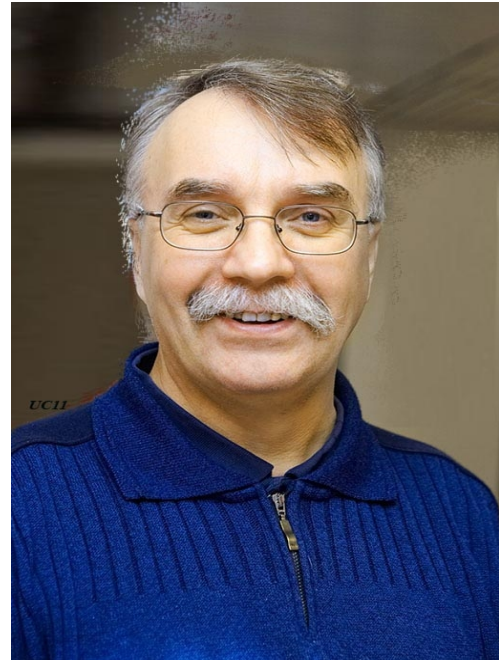
Current Institution-Affiliation-

Private Address:

Professor of Immunobiology
Department of Medical Microbiology and
Immunology, University of Turku, Kiinamyyllykatu
13, 20520 Turku Finland

email:

olli.lassila@utu.fi



What is your connection with the BII / The period of time you were in the BII:

Scientific Member October 1982- August 1988

Some description of yourself to share:

Currently we are working on the transcriptional control of plasma cell differentiation using DT40 model. We made DT40 mutants for transcription factors like ikaros, aiolos, helios, pax-5, bcl6, irf4 and irf8. Available resources have been obtained from EU and Academy of Finland.

2007-2009 I was a Vice Dean in the Medical faculty of University of Turku.

Name: Tomas LEANDERSON, Ph.D.

Current Institution-Affiliation-Private Address:

Professor, Immunology group, Lund University, BMC D14, 21114 Lund, Sweden

email:

tomas.leanderson@med.lu.se

What is your connection with the BII / The period of time you were in the BII:

Scientific Member 1983-1986

Some description of yourself to share:

Professor of immunology at Lund University since 1990.

CSO of a biotech company (Active Biotech) since 1999 and CEO since 2008.

Married and remarried; 4 children.

Current research interest: Regulation of immunity in autoimmunity and cancer.

Name: Charles MACKAY, Ph.D.

Current Institution-Affiliation-Private Address:

School of Biological Sciences
Faculty of Medicine, Nursing and Health Services
Monash University, Australia

SPRF (Honorary)
Garvan Institute for Medical Research, Australia

Tel.: +61 3 99029510

Email: c.mackay@me.com

What is your connection with the BII / The period of time you were in the BII:

Scientific Member 1987-1989

Some description of yourself to share:

Professor

| Please see PUBMED for **publication** list.

Name: Kenneth B. MARCU, Ph.D.

Current Institution-Affiliation-

Private Address:

1^o Affiliation:

Professor of Biochemistry,
Microbiology and Pathology, Stony
Brook University, Stony Brook, NY,
USA

2^o Affiliations:

Visiting Senior Scientist, Rizzoli
Orthopedic Institute, Bologna, Italy
Foreign Member, BRI FORTH
Institute, Ioannina Medical School,
Ioannina, Greece

emails:

Kenneth.marcu@stonybrook.edu
and Kenneth.marcu@unibo.it



What is your connection with the BII / The period of time you were in the BII:

Scientific Member Sept 1983 - August 1984, sabbatical, with George Koehler

Some description of yourself to share:

I was on a sabbatical leave from Stony Brook University, and I was principally in George Koehler's lab, working at the bench and brainstorming a lot with Andre Trauneker (great fun that I fondly remember to this day). My daughter was in kindergarten in Basel that time and now has an 8 year old girl of her own.

I live and work year round on my research projects at Stony Brook, New York, USA and Bologna, Italy (with different parts of my family living in both countries). My current research involves elucidating the differential functions and mechanisms of action of IKK~~My current research involves elucidating the differential functions and mechanisms of action of IKK~~—alpha and IKK~~and IKK~~—eta (inhibitor of NF-kappaB kinases alpha and beta) in different disease-related settings including: (1) pro-inflammatory innate immune responses and abnormal hypertrophic-like differentiation of chondrocytes in osteoarthritic disease, (2) the regulation of specific cell migration responses that initially elicit an inflammatory reaction and subsequently lead to repair damaged tissue, and (3) alterations in gene regulation that impact on cellular senescence and epithelial to mesenchymal cell transitions that can lead to the progressive development of malignancies. To carry out these projects I am working in close collaboration with colleagues at Stony Brook University, the Hospital for Special Surgery (Manhattan USA), the Rizzoli Orthopedic Institute (Bologna, Italy), the BRI FORTH Institute (Ioannina, Greece) and San Diego State University (San Diego, CA, USA).

Name: Wolfgang Richard MAYR, M.D.

Current Institution-Affiliation-

Private Address:

Director

Department for Blood Group Serology and Transfusion Medicine, Medical University of Vienna, Waehringer Guertel 18-20, A-1090 Wien, Austria

email:

wolfgang.mayr@meduniwien.ac.at



What is your connection with the BII / The period of time you were in the BII:

Scientific Member 1. June, 1972 – 31. May, 1973 on human immunogenetics

Some description of yourself to share:

Born on 29.07.1944 in Vienna (Austria); nationality: Austrian, *Qualifications as medical specialist:* blood group serology, transfusion medicine and immunology

Docentships for blood group serology (1974), immunology (1984) and transfusion medicine (1986)

After BII

- 01.07.1973 – 30.11.1986: assistant professor (until 13.02.1974), then associate professor, Institute for Blood Group Serology, University of Vienna

- 01.12.1986 – 30.09.1992: Director, Institute for Transfusion Medicine, RWTH Aachen, Germany

- 01.10.1992 – 31.12.2009: Director of the Division of Blood Group Serology and Chairman, Department of Blood Group Serology and Transfusion Medicine, University of Vienna / Medical University of Vienna

-01.01.1994 – 31.03.2005: Medical Director, Blood Donation Center for Wien, Niederösterreich and Burgenland, Austrian Red Cross

- from 01.04. 2005: Medical Councillor for Transfusion Medicine, Austrian Red Cross

- from 01.01. 2010: Director, Department for Blood Group Serology and Transfusion Medicine, Medical University of Vienna

Scientific work: > 560 publications on: transfusion medicine, blood group serology, immunohematology, immunogenetics, transplantation immunology and HLA.

Editor-in-Chief of *Vox Sanguinis* (from 2003; 1977-2003: editor of Section III – Genetic markers of human blood); member of the editorial board of *Human Immunology*, *Forensic Sciences International: Genetics*, and *Minerva Biotechnologica*. Councillor of the

International Histocompatibility Workshops and Member of the HLA Nomenclature Committee, Organiser of the 26th Congress of the International Society of Blood Transfusion

2000 in Vienna / Austria, Dr. med honoris causa, University of Olomouc / Czechia (1994)

Name: Kazuo OHNISHI, Ph.D. _

Current Institution-Affiliation-

Private Address:

Senior Scientist
 Department of Immunology
 National Institute of Infectious Diseases (NIID)
 (Professor, The University of Tsukuba, Cooperative
 Graduate School)
 1-23-1 Toyama, Shinjuku-ku, 162-8640 Tokyo, Japan
 Tel.: +81-3-5285-1111 (Operator)
 +81-3-4582-2713 (Direct)
 Fax: +81-3-5285-1156

email:

ohnishik@nih.go.jp

What is your connection with the BII / The period of time you were in the BII:

Scientific Member 1993 –1995, 1996 – 1999



Some description of yourself to share:

Current research subjects:

- 1) Immunological detection of newly emerging infectious diseases;
 Establishment and characterization of monoclonal antibodies against SARS coronavirus.
 Methods Mol. Biol. 454:191-203 (2008)
 Severe acute respiratory syndrome (SARS) coronavirus: application of monoclonal antibodies and development of an effective vaccine Rev. Med. Virol., 16:117-131 (2006)
- 2) Biology of Lymphocyte-cadherin (BILL-cadherin/Cdh-17);
 Lymphocyte-expressed BILL-cadherin/cadherin-17 contributes to the development of B cells at two stages, Eur. J. Immunol.,35:957-963 (2005)
 The identification of a nonclassical cadherin expressed during B cell development and its interaction with surrogate light chain. J. Biol. Chem., 275:31134-31144 (2000)
- 3) Function of PreBCR;
 The nonimmunoglobulin portion of δ 5 mediates cell-autonomous pre-B cell receptor signaling. Nature Immunol., 4:817-819 (2003)
 Molecular components and assembly of δ -surrogate light chain complexes in pre-B cell lines. J. Biol. Chem., 269:28347-53 (1994)

Name: J. Richard PINK, Ph.D.

Current Institution-Affiliation-Private Address:

Chemin de la Cure 25, CH-1008 Prilly, Switzerland

email: pinkr@mail.com

What is your connection with the BII / The period of time you were in the BII:

Scientific Member 1971-1977, 1981-1984

Some description of yourself to share:

Born and educated in Northern Ireland, UK. Married, three children.

Graduated from Cambridge University, UK (BA 1965; PhD in Biochemistry 1968, for work done with C. Milstein at the Laboratory of Molecular Biology, Cambridge, on sequences of human immunoglobulins).

Postgraduate research work: on schistosomiasis in wild baboons, (Serengeti, Tanzania, 1965); structures of immunoglobulins (University of California, San Francisco, 1969-71).

Member BII 1971-77: characterised avian major histocompatibility antigens (with V. Miggiano, A. Ziegler, H. Huser, A. Buder and others).

University of Geneva 1977-81: glycosylation of membrane proteins.

Member BII 1981-84: characterised lymphocyte precursors in chick embryos (with O. Vainio, O. Lassila, M. Ratcliffe, J-C Weill, A-M Rijnbeek and others)

Hoffmann-La Roche AG, Basel (1984-93): participated in and then managed preclinical malaria vaccine development; (1994-98) work on gene therapy in neurobiological models.

Freelance consultant and medical writer (1998-), and staff member of WHO's Tropical Disease Research Unit (TDR) (1999-2004): helped to organize compound acquisition for TDR's programme of high-throughput compound screening for potential anti-parasite activity.

Name: Hansruedy RAMSEIER, Ph.D.

Current Institution-Affiliation-Private Address:

Grossplatzstrasse 12, CH-8118 Pfaffhausen, Switzerland

Email: pfopf-hp-h.ramseier@ggaweb.ch

What is your connection with the BII / The period of time you were in the BII:

Scientific Member 1971-1973

Some description of yourself to share:

Professor Emeritus

Please see PUBMED for publication list

Name:

Walter F. RIESEN, Ph.D, MD hon

Current Institution-Affiliation-

Private Address:

Hintergasse 65, CH-8253 Diessenhofen,
Switzerland

email:

wf.riesen@bluewin.ch



**What is your connection with the BII /
The period of time you were in the BII:**

Scientific Member 1974-1976, Advisor 1980-1992

Some description of yourself to share:

Professor Emeritus, Cofounder of Medinfo edition, Editor of info@herz+gefäss
See PUBMED for publication list

Name:**Nobuo SAKAGUCHI, M.D., Ph.D.****Institution-Affiliation-****Private Address:**

Professor

Department of Immunology, Graduate School
of Medical Sciences, Kumamoto University
1-1-1, Honjo, Kumamoto 860-8556, Japan

Tel.: +81-96-373-5134

Fax: +81-96-373-5138

email:nobusaka@kumamoto-u.ac.jpnobuosakaguchi@gmail.com**What is your connection with the BII / The period of time you were in the BII:**

Scientific Member 1. October 1983– 30. September 1986

Some description of yourself to share:

I experienced many things during my stay at the BII.

During this period, there was a fire accident, and every member worked hard for the reconstruction of the house. I was sticking to the lab to characterize the Lamda 5 cDNA. I was impressed that a bearded man worked so hard for the reconstruction of the house (to support the members) by pushing the cart in the garage underground day and night.

Especially, he helped me a lot for the laboratory setting. I miss him.

I am still studying the maturation of B-cells. The molecular mechanism for generation of high-affinity antibody is a big issue in immunology.

Please keep watching it, Charley! Thank you.

Name: Mariolina (Mao) SALIO, M.D.

Current Institution-Affiliation-

Private Address:

Clinical Research Fellow
MRC Human Immunology Unit
The Weatherall Institute of Molecular
Medicine
John Radcliffe Hospital
Headington Oxford
OX3 9DS
UK

Tel.: +44 1865 222413

Fax: +44 1865 222502

email:

mariolina.salio@imm.ox.ac.uk



What is your connection with the BII / The period of time you were in the BII:

Visiting Scientist-Member 1996-1999

Some description of yourself to share:

I worked with Antonio Lanzavecchia on a Fellowship from the European Community (EUNIDI network), from Jan 1996, until October 1999.

Name: Marc SHULMAN, Ph.D.

Current Institution-Affiliation-Private Address:

Professor Emeritus,
Department of Immunology
University of Toronto, Toronto, Canada
Member, Marine Biological Laboratory, Woods Hole, MA, USA
Tel: +1508 444 8892

Email:

marc.shulman@gmail.com

What is your connection with the BII / The period of time you were in the BII:

Scientific Member 1976-1979

Some description of yourself to share:

After my three years at BII, I moved to the University of Toronto, where I spent the next 25+ years. My work in Toronto was a direct continuation of the projects that Georges Köhler and I had initiated at BII and focused on the molecular basis of IgM gene and protein function.

I retired a few years ago, leaving behind two major unsolved problems -- the physiological significance of J chain-deficient hexameric and pentameric IgM and the molecular action of the transcriptional enhancer.

Post-retirement I am still involved in some projects in molecular immunology and a few other academic activities, but I now spend much of my time on Culebra, a small island in the Caribbean. Visitors are very welcome.

Name:**Charles SIDMAN, Ph.D.****Current Institution-Affiliation-****Private Address:**ECS Capital Partners, LLC,
PO Box 200, Bar Harbor, ME 04609,
USA**email:**

csidman@ecs-partners.com

**What is your connection with the
BII / The period of time you were in the BII:**
Scientific Member 1978-1983**Some description of yourself to share:**

Since BII I have spent 10 years as a Staff Scientist at The Jackson Laboratory in Bar Harbor, Maine, 19 years as a Professor of Molecular Genetics, Biochemistry and Microbiology, and of Business, at the University of Cincinnati in Cincinnati, Ohio, and now am active in Angel investment circles and run a Venture Fund operating nationally and worldwide.

My wife Amy and I celebrate our 41st anniversary this year, and our two children Alfred and Elanor (whom many of you knew) are both wonderful adults, happily married and well launched.

I look forward to seeing again many people who were so important and enjoyable for us during and after our Basel years.

Name: Alan TYNDAL, M.D.

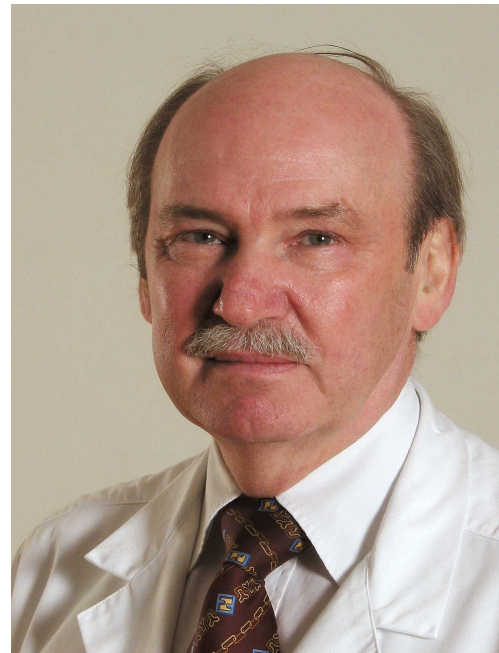
Institution-Affiliation-

Private Address:

Professor
Dept of Rheumatology
University of Basel, Switzerland
Private :
In Erlisacker 14, Bottmingen CH-4103, Switzerland

email:

alan.tyndall@fps-basel.ch



What is your connection with the BII / The period of time you were in the BII:

A friend and invited speaker

Some description of yourself to share:

Alan Tyndall is professor and head of the department of rheumatology in the University of Basel since 1991. He is a graduate from the University of Sydney, Australia and completed his clinical and research training in internal medicine and rheumatology and research in Sydney, Canberra and London.

Current special interests include hematopoietic stem cell transplantation in autoimmune diseases, mesenchymal stem cells in autoimmune disease, systemic sclerosis, infections and TNF alpha blockade and osteoporosis.

He has over 180 publications in peer reviewed journals and 20 book chapters.

He currently serves as chairman of the EULAR Scleroderma Trials and Research (EUSTAR) clinical affairs committee, the secretary of the World Scleroderma Foundation and is acting chair for two NIH safety committees for stem cell trials. He is past chairman of the European League Against Rheumatism (EULAR) Standing Committee for Clinical Affairs (ESCCA) and the autoimmune disease working party of the European Group for Blood and Marrow Transplantation (EBMT).

Name: Jack VON BORSTEL, Ph.D.

Current Institution-Affiliation-Private Address:

Professor Emeritus
Department of Genetics, University of Alberta, Alberta, Canada

email: vborstel@ualberta.ca

What is your connection with the BII / The period of time you were in the BII:

Scientific Member 1981-1982, and in another later year, Visiting Scientist, summers until 1997, with Charley Steinberg

Some description of yourself to share:

Charley Steinberg and I both realized, in 1969, that The Biology Division of the Oak Ridge National Laboratory was going to lose its vitality after the Director, Alex Hollaender, retired. So, when Niels Jerne invited Charley to join the new Basel Institute for Immunology, this was a perfect solution for him, and he accepted. At the same time, I was offered a position at the University of Alberta in Canada, and I accepted.

I began coming to BII when I realized that as a geneticist, I really needed to know more about immunology. Charley Steinberg invited me to come to the BII in 1981 when I had a year's leave of absence from the University of Alberta after I completed my 10-year Chairmanship of the Department of Genetics. Charley and I had been close collaborators during the years we were in Oak Ridge. I was really glad to be where we could collaborate again.

The year in Basel was so wonderful for me that I went to the BII during summers when we were not teaching in Edmonton. Later I had another Sabbatical Leave of Absence to return to Basel for a year.

Also, I made full use of the Summer Students Program of the BII, and sent our best students from the University of Alberta to work at the BII during the summer.

In 1991, Michael Kyba worked with Antonio Lanzavecchia. In 1992, Reuben Harris worked with Antonio Lanzavecchia. In 1994, Anil Joy worked with Peter Lane. In 1995, Erika Meier worked with Louis Du Pasquier. In 1997, Michael Matic worked with Ed Palmer. In 1999, [Christopher Christopher](#) Carlson worked with Juergen Bachl.

In 1998 I sent one young man, Andre Puglesi, from Parma, Italy, to Basel (Iliana Ferrero's son). At the BII he worked with Jacob Heinz. Andre was awed with what he had learned from investigators and seminars there, and was very appreciative for the opportunity that led him to pursue further education in Switzerland and to obtain a Ph.D. in Geneva.

Name: Hans-Joachim WALLNY, Ph.D.

Current Institution-Affiliation-

Private Address:

Novartis Pharma AG
Technical Research and Development
Technical Project Leader
Forum-1
CH-4002 Basel, Switzerland
Tel.: +41 61 324 7383,
mobile +41 49 572 2547

email:

hans-joachim.wallny@novartis.com



What is your connection with the BII / The period of time you were in the BII:

Scientific Member May 1992 - January 1995, worked with Klaus Karjalainen, Jim Kaufman and Stephane Demotz.

Some description of yourself to share:

I work in Biotechnology drug development and am an internationally recognized expert in the field of potency assay for quality control purposes for biotech drugs.

I work also on a stem cell therapeutic.

2 kids, married, live in Grenzach Wyhlen, Germany

Name: Melanie WILSON, Ph.D.

Current Institution-Affiliation-Private Address:

Professor
Department of Microbiology
University of Mississippi Medical Center
Jackson, Mississippi 3921 USA

email: mwilson@umc.edu

What is your connection with the BII / The period of time you were in the BII:

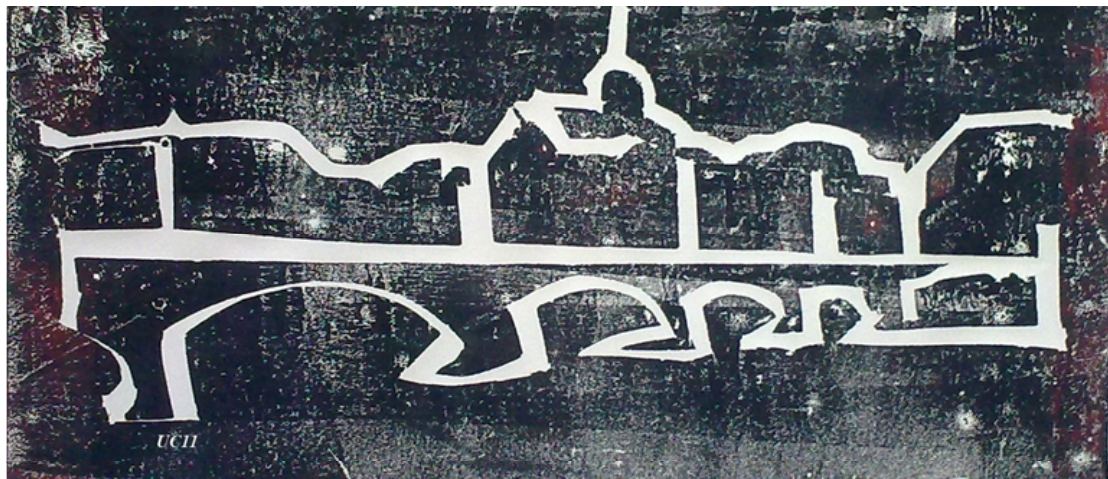
Scientific Member 1988-1992, with Louis Du Pasquier

Some description of yourself to share:

Dr. Melanie Wilson is a Professor in the Department of Microbiology at the University Mississippi Medical Center (UMMC). Melanie received her Ph.D. in Biochemistry and Molecular Biology from the Medical University of South Carolina in 1987 and was a Scientific Member at the Basel Institute for Immunology from 1989-1992. She joined the faculty at UMMC in 1992. At UMMC she is a lecturer for medical and dental immunology courses and serves as course director for the Graduate Immunology Course.

Her research interest is in the evolution of the immune system, specifically the structure and function of B and T cell receptors, Fc-receptors, antigen receptor signaling and their gene regulation. For the past 25 years Melanie has been working with the channel catfish model system and she and her collaborators at UMMC have established a catfish leukocyte culture system and developed clonal catfish B, T, NK and macrophage cell lines. She is the author of more than 95 peer-reviewed publications.

Students



Hochdruck / Highprint

Name: Tilman BORGGREFE, Ph.D.

Institution-Affiliation-Private Address:

Group Leader
Department of Cellular and Molecular Immunology
Max-Planck-Institute of Immunobiology and Epigenetics
Stübeweg 51, D-9108 Freiburg, Germany
Tel.: +49-761-5108-715
Fax: +49-761-5108-799

email:

borggreffe@ie.mpg.de

What is your connection with the BII / The period of time you were in the BII:

Summer Student 1993, Ph.D. Student 1994-1998

Some description of yourself to share:

I joined the BII as summer student (1993) and subsequently as a Ph.D.-student (1994-98) in Rolf Jessberger's lab working on class switch recombination. After a postdoc in Roger Kornberg's lab at Stanford University, I started my own lab at the University of Ulm (Department head: Hans-Reimer Rodewald). Five years ago, my lab moved to the Max – Planck –Institute of Immunobiology in Freiburg.

My laboratory wants to understand the molecular mechanisms that establish and maintain gene expression programs by key signal transduction pathways, using the conserved Notch pathway as a paradigm. Upon ligand binding, the intracellular part of the Notch receptor is cleaved off and translocates to the nucleus, where it binds the core transcription factor RBP-J and activates transcription of target genes. In the absence of a signal, RBP-J switches off target gene expression by assembling a corepressor complex, assuring a tight control of the Notch response.

Recently, we have biochemically characterized the RBP-J repressor complex (Oswald et al. 2005; Salat et al. 2008; Borggreffe and Oswald 2009; Liefke et al. 2010). Furthermore, we have established a dynamic system to switch ON and OFF the Notch target genes thereby allowing us to unveil dynamic activating and repressing histone marks at particular genes in response to Notch. We have shown that dynamic histone methylation plays a major role to regulate the Notch response (Liefke et al. 2010).

On a personal side, my wife Anne and I are blessed with three wonderful, lively boys (Pierre (6), Marcel (4) and Pascal (3)).

Name: Paolo GHIA, M.D. Ph.D.

Current Institution-Affiliation-

Private Address:

Università Vita-Salute San Raffaele, Via
Olgettina 58, I-20132 Milano, Italy

email:

ghia.paolo@hsr.it



What is your connection with the BII / The period of time you were in the BII:

Ph.D. Student 1. January 1993 – 31. March 1996

Some description of yourself to share:

Paolo Ghia received his MD from the University of Torino, Italy, followed by a residency in Internal Medicine. He received his PhD working at the Basel Institute for Immunology in Basel, Switzerland, in the lab of Fritz Melchers and Ton Rolink where he studied the development of normal human B lymphocytes. He moved to the Dana-Farber Cancer Institute, Harvard Medical School, in Boston where he studied the molecular mechanisms responsible for the pathogenesis of chronic lympho-proliferative disorders, and in particular of Follicular Lymphoma, aiming at transferring his immunological knowledge into the hematological arena.

He is now working in Milano, as Associate Professor of Internal Medicine at the Università Vita-Salute San Raffaele, as Scientific Coordinator of the Lymphoma Unit, Department of Onco-Hematology, and Head of the Laboratory of B Cell Neoplasia, Division of Molecular Oncology, at the San Raffaele Scientific Institute.

His research interest is the study of the molecular and cellular mechanisms, including the role of antigenic stimulation and immunoglobulin features, responsible for the onset of indolent lymphomas and in particular of Chronic Lymphocytic Leukemia (CLL). More recently, he focused his research on the newly defined clinical entity named Monoclonal B Lymphocytosis (MBL) and its relationship with leukemic transformation. On these topics he published over 90 manuscripts in peer-reviewed journals.

He is a member of the board of the European Research Initiative on CLL (ERIC), where he acts as coordinator of the scientific projects. He is also a member, as lymphoma expert, of the Scientific Programme Committee of the European Hematology Association (EHA). He is Section Editor for CLL and B-cell malignancies of the NPG journal "Leukemia".

Name: Hans-Martin JÄCK, Ph.D.

Current Institution-Affiliation-

Private Address:

Division of Molecular Immunology
Nikolaus-Fiebiger-Zentrum
University of Erlangen-Nürnberg
Gluckstrasse 6 D-91054 Erlangen, Germany
Tel: +49-9131-8535912
Fax: +49-9131-8539343

e-mail:

hjaeck@molmed.uni-erlangen.de
www.molim.uni-erlangen.de,
www.lymphozyten.de

Damaschkestr. 63
D-91088 Bubenreuth, Germany

email: hjaeck@gmail.com



What is your connection with the BII / The period of time you were in the BII:

Ph.D. Student 1984 with Matthias Wabl

Some description of yourself to share:

Hans-Martin received his doctoral training in Tübingen, the Basel Institute for Immunology and the University of California at San Francisco. After obtaining his Ph.D. in 1988 from the University of Tübingen, he worked for 2 years as a postdoctoral fellow at UC San Francisco in the lab of Matthias Wabl and for 6 years as Assistant and Associate Professor at the Loyola University of Chicago's Medical School. In 1998 he moved to Erlangen to head the Division of Molecular Immunology.

His research aims to elucidate the molecular mechanisms that control the development of mature B cells into effector cells (memory B- and plasma cells). In particular, he wants to understand the physiological and pathologic functions of small regulatory micro-RNAs (miRNA) during the adaptive humoral immune response and the pathogenesis of autoimmune diseases and multiple myeloma.

Name: Elisabetta PADOVAN, Ph.D.

Current Institution-Affiliation-Private Address:

Professor

Faculdade de Medicina da Universidade de Lisboa (Lisbon, PT) and

Instituto Gulbenkian de Ciência

Antigen Presentation

Rua da Quinta Grande 6

2780-156 Oeiras, Portugal

Tel.: +351 214464647

Fax: +351214407970

www.igc.gulbenkian.pt

email: epadovan@igc.gulbenkian.pt

What is your connection with the BII / The period of time you were in the BII:

Ph.D. student 1992 – 1995 with Antonio Lanzavecchia

Some description of yourself to share:

I have a Ph.D. degree in “Molecular and Cellular Biopathology” with focus on Human Immunology. My current research interest is immune_modulation.

Name: Nicole SCHMITZ, Ph.D.

Current Institution-Affiliation-

Private Address:

Senior Lab Head
Actelion Pharmaceuticals Ltd,
Gewerbestrasse 16, CH-4123 Allschwil, Basel,
Switzerland

email:

nicole.schmitz@actelion.com;
nicole.schmitz1@yahoo.com



What is your connection with the BII / The period of time you were in the BII:

Summer Student 1998, Ph.D. Student Spring 1999-2001

Some description of yourself to share:

I started as a summer student in 1998 in the group of Manfred Kopf and Martin Bachmann and did my PhD thesis in spring 1999 in the same group. After the closure of the BII, already located at the ETH Zürich, I finished my PhD in Manfred's Lab in 2003. Being back in Basel since 2009, I am still in contact with quite some BII members. Nevertheless, I would like to meet and be in contact with more "old friends" of the Institute thus looking forward to this meeting in Basel.

After a postdoc in Manfred's Lab I joined Cytos Biotechnology AG in Zürich. After five years working experience in the field of vaccine design and development at Cytos, I joined Actelion Pharmaceuticals Ltd in Basel in order to take on new challenges. Today, I am a Senior Lab Head in Immunology responsible for *in vivo* efficacy studies of our drug compounds. Although I switched from basic science into the Industry/Biotech, I never lost my passion for immunology and basic research. I am very lucky that I am still able to do my own research in our environment.

Name: Andreas ZIEGLER, Ph.D.

Current Institution-Affiliation-

Private Address:

Director
Institut für Immungenetik,
Charité-Universitätsmedizin Berlin,
Freie Universität Berlin,
Thielallee 73,
D-14195 Berlin, Germany
Leistikowstrasse 3, D-14050 Berlin, Germany

email:

andreas.ziegler@charite.de



What is your connection with the BII / The period of time you were in the BII:

Ph.D. Student 1973-1976

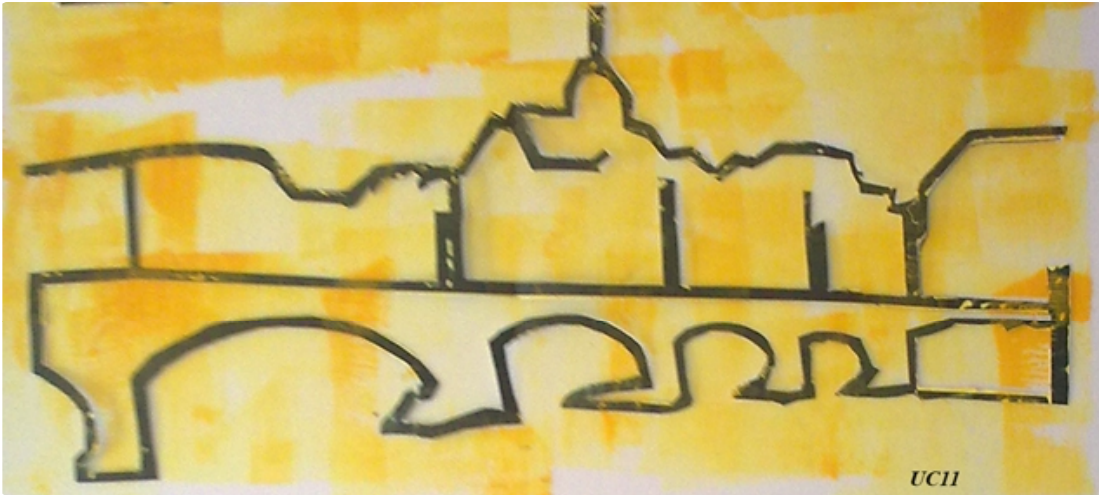
Some description of yourself to share:

Following work for my dissertation (MHC antigens of chicken) at the BII, I obtained my PhD degree at the Universität Heidelberg, Germany and then joined the MRC Laboratory of Molecular Biology in Cambridge, UK. From 1979-1988, I worked at the Universität Tübingen, Germany, from 1988-1989 at the Universität Marburg, Germany, and since 1989, I am the head of the Institut für Immungenetik at the Charité-Universitätsmedizin Berlin, Freie Universität Berlin.

Scientific interests: structure/function relationships of MHC molecules, biophysical basis of selection procedures in the immune system and in reproduction, and evolution of the extended MHC.

I have been married for 35 years; we have two sons who are both scientists. I enjoy music, visual arts, chess, and my family.

Staff



Papercutting & Painting

Name: Viviane ANQUEZ

Current Institution-Affiliation-

Private Address:

Hoffmann-La Roche AG
PCDMPA 70/332
Grenzacherstrasse
CH-4070 Basel
Switzerland

email:

viviane.anquez@roche.com



What is your connection with the BII / The period of time you were in the BII:

Laboratory Research Technician 11.1987 – 07.2002

Worked with

Dr. Weill J.C and Dr. Reynaud Cl.Agnès (1982-1991), Dr. Günthert U. (1992-1998),
Dr. Rodewald H.Reimer (1998-1999), Dr. Wimmer Ch. (1999-2002);
then, at Hoffmann-La Roche, Dr. Adessi C. (2003-2007), Dr. Baumann K. (since2008)

Some description of yourself to share:

After having worked for around 20 years in the field of immunology, when the closing of BII occurred, I moved to the central nervous system and more precisely into applied research for Alzheimer's Disease.

Name: Jean-Pierre DANGY

Current Institution-Affiliation-

Private Address:

STPH Institute Socinstrasse 57, CH-4056 Basel, Switzerland

email:

jp.dangy@unibas.ch



What is your connection with the BII / The period of time you were in the BII:

Laboratory Research Technician, September 1990 - August 2001

Some description of yourself to share:

From France, I had previous experiences at the Institut Curie and Ecole Normale Supérieure de Lyon where I graduated with a Master in Science.

I had a great time in the BII, working successively with Beat Imhof, Dominique Dunon, Thomas Goëbel and Jörg Kirberg. I am now working as a lab manager in the group of Professor Gerd Pluschke on tropical diseases such as: cerebral meningitis and Buruli ulcer

I was involved in some musical events at the Bii celebrations (Christmas dinner, Birthdays...)

I'm still playing music as my hobby in two bands

<http://www.mojo.fr>

<http://www.soulmaniacs.com>

Name: Rosmarie LANG

Current Institution-Affiliation-Private Address:

University of Basel, Hebelstrasse 20, CH-4031 Basel, Switzerland

email: r.lang@libero.it

What is your connection with the BII / The period of time you were in the BII:

Laboratory Research Technician 1974 -1980

Some description of yourself to share:

Smiling....

Name: Anne MARCUZ (born Mercier)

Current Institution-Affiliation-

Private Address:

Hoffmann-La -Roche AG, CNS department,
Grenzacherstrasse, CH 4070 Basel Switzerland

Cidex 188 - 90150 Fraix-F, France

email:

anne.marcuz@roche.com



What is your connection with the BII / The period of time you were in the BII:

Laboratory Research Technician 1992-2001, with Louis Du Pasquier.

Some description of yourself to share:

I was working on frogs, tadpoles & finally on axolotls with Ellen Hsu for 3 years, Dario Grosberger for 3 years, 6 months interim with Joseph Schwager, Melanie Wilson for 3 years, Isabelle Chretien-Brocker for 6 years and Benedict Sammut for 3 years, always with the benevolent supervision of Louis Du Pasquier.

I am a happy mother of 26 and 24 years old daughters and a 15 years old son.

My husband and I are still spending our “off-job” time in renovating our old farm into [a](#)”B & B”.

Though not sportive, I recently discover Nordic walking which I try to practice as often as possible at lunch time around the Roche area, and I enjoy long day trips in the Vosges mountains with friends and my two Bernese mountain dogs over weekends.

I am now working in the CNS (Central Nervous System) research department from Roche and get uncertain about the future at each reorientation of the projects and changes in the management. It is a quite uncomfortable position, like sitting on the fence.

I miss the time at the BII although I did not participate [in](#) all the events due to familial priority but the working conditions [w](#)here optimal in a friendly environment.