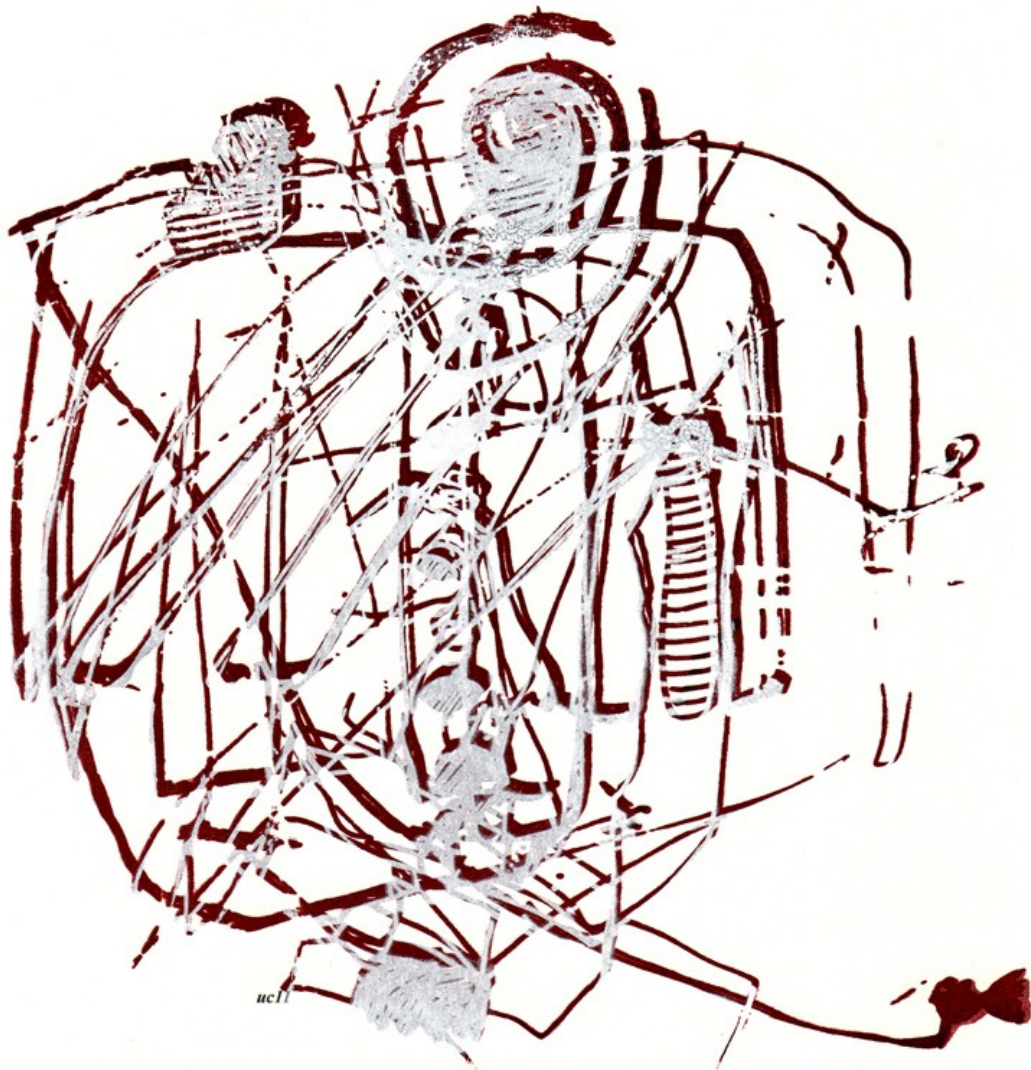


Who is Who of the BII Alumni



Bii-at-40

1971-2000-2011

⇒ ***Bii-at-50***

1971-2000-2011-2021

Who is Who of the BII-Alumni

**For the Event of BII-at-50, 10th June, 2021
&
A Video Conference via jitsi**

Edited by
Una Chen, Randy Baron and Richard Pink

Published by
BII-Alumni-Get-Together
International Senior Professional Institute e.V. (ISPI e.V.)

Coverage: Siebdruck / Screen-print of a sketch on “free association”

Introduction

Friday, 10th June 2011, **was** the official 40th anniversary of the Basel Institute for Immunology (BII-at-40), we have organized various celebration events, including a two-day symposium on “Immune Responses and Autoimmunity” (www.ispiev.org, under Symposium 2011), public education on “Immunity and Diseases”, a concert, an exhibition, and a dinner party.

A booklet “Who is Who of the BII-Alumni” was assembled, which included the good wishes of many alumni and friends who came to celebrate the BII-at-40 as well as those who could not attend this event.

The BII was founded and supported by Hoffmann-La Roche and, since its foundation in 1971, had an outstandingly brilliant 30 years history until its closure in 2001. The BII has produced three Nobel Prize winners: Niels Jerne, Georges Köhler (with Cesar Milstein, 1984) and Susumu Tonegawa (1987). It was the “Mecca” of the immunology-scientific community. Several hundreds of scientists passed through the Institute, either as a scientific member, a visiting scientist, or a student. Even today, one third of immunologists of the immunology world, actively contributing to the field of immunology, spent sometime of their life in the BII and in the city of Basel.

Looking back to the BII time and the development of alumni, one finds that in the 30 years of operation, the Institute attracted hundreds of people with very original thinking, free minds and many unique personalities. Many BII members are leaders by nature, most of them are creatively talented in many fields and are still conducting break-through research contributing to knowledge and the welfare of mankind. The spirit of BII continues even after the closing of the Institute; many of the BII alumni are actively involved in creative work at present and are transferring the legacy of the BII spirit to the successive generation. Many BII alumni are giants and heroes in the field that they now are actively engaged in.

Through the opportunity of this symposium, we wished to enable the speakers, participants, and supporting organizations to get together in order to reconnect, to discuss and might be to spark additional collaborations in the future.

We have looked forward to your participation in this BII-at-40 event to make it into another unforgettable celebration event.

Above is the edited text of the Introduction, written and published in 2011.

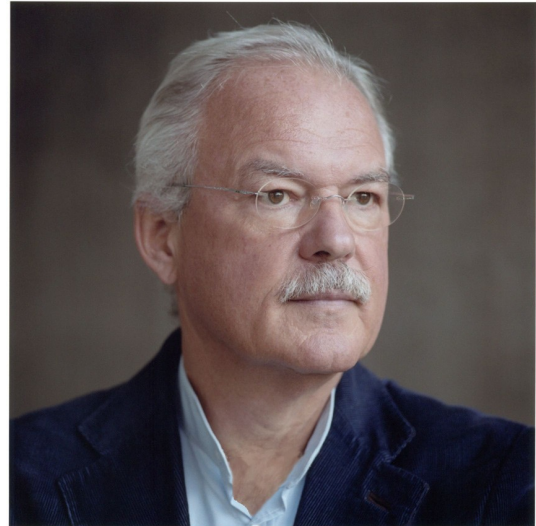
10 years later, Basel Institute for Immunology will be 50 years old, the birthday will be Thursday, 10th of June, 2021. Due to the pandemic, it is unlikely that we could get-together in person to celebrate this 50th year anniversary. However, we could communicate online, to update the “biiwhoiswho”, and possible to have a drink together via jitsi.

In this e-book is the file of members, students, and stuffs who have contributed to the “Bii-at-40”, published in ispiev.org webpage (in pdf and doc formats), we asked all contributors to update their page. We are also inquiring these colleagues, who were not in the last issue of “biiwhoiswho” to join us.

Una Chen, Ph.D. in Immunology. U. C. Berkeley, M.A. in Design, FHNW Basel
on behalf of Organization Committee of BII-at-40 Event and BII-at 50 Event; and Co-editor of Who is Who of the BII-Alumni 2011 and 2021.

For Basel Institute for Immunology 40th anniversary celebration, 9 – 10th June 2011

Even though my stay at the Basel Institute for Immunology (BII) was rather brief, it was highly illuminating and had a major impact on my future career as an immunologist. I was most impressed by the spirit of openness and collegiality of the institute, where I was immediately integrated into the BII's research community. The BII was a leader for many immunologists mostly for two reasons: First, its goal of highest scientific originality, precision, and quality and second, its spirit, which immediately convinced its members to whole-heartedly follow suit. I know that this is an over-simplification but the enormous output of leaders in immunology clearly argues for its success. They say performance depends on attitude and judging from the BII's track record, its overwhelmingly positive attitude is obvious, and the contagiousness of its attitude has succeeded in imprinting a spirit of quality and openness in research to the many students, post-docs and researches who have walked through its doors. I am proud to have been there – to have learned about the art and tools of immunological research – at the most vibrant center of its kind.



Stefan H.E. Kaufmann

Max Planck Institute for Infection Biology, Berlin

President, International Union of Immunological Society

6th April, 2011

=> Past President and Honorary Member of the German Society of Immunology (DGfI), Past President of the European Federation of Immunological Societies (EFIS), and Past President of the International Union of Immunological Societies (IUIS)

10th June, 2021.

Index & New addition + Revision 2021-2022

bii-at-50
2021

Introduction

Greetings from Past President of IUIS

Scientists (ABC Family Name Order)

BEREK Claudia	10	berek@drfz.de
BOGEN Bjarne	11	bjarne.bogen@medisin.uio.no
CHEN Una	12	Una.Chen@gmx.de
DEMBIC Zlatko	13	zlatko.dembic@odont.uio.no
DE LIBERO Gennaro	14	gennaro.delibero@unibas.ch
DU PASQUIER Louis	15	louis.dupasquier@unibas.ch
FATHMAN Garry	16	cfathman@stanford.edu
FLAJNIK Martin	17	mflajnik@som.umaryland.edu
GERSON Donald	18	dongerson@pnuVax.com
GÜNTHERT Ursula	19	ursula.guenther@unibas.ch
HAMILTON John	20	jahami@unimelb.edu.au
HANSEN John	21	jhansen@usgs.gov, jdh25@uw.edu
HENGARTNER Hans	22	hans.hengartner@usz.ch
HEUSSER Christoph	23	c.heusser@intergga.ch
HOLLÄNDER Georg	24	georg-a.hollaender@unibas.ch
IMHOF Beat	25	Beat.Imhof@unige.ch
JACOBS Heinz	26	h.jacobs@nki.nl
HOZUMI Nobumichi	27	incdivnob@gmail.com
JULIUS Michael	28	michael.julius@sri.utoronto.ca
KAPSI Zoher	29	zkapasi@emory.edu
KARJALAINEN Klaus	30	Klaus@ntu.edu.sg
KARASUYAMA Hejime	31	karasuyama.mbch@tmd.ac.jp
KAUFMAN Jim	32	jfk31@cam.ac.uk

Scientists (ABC Family Name Order)

KAUFMANN Stefan	33	email Kaufmann@mpiib-berlin.mpg.de
KELLER Gorden		gordon.keller@uhnresearch.ca
KETTMAN Jack	34	jack_kettman@msn.com jackkettman@gmail.com
KINCADE Paul	35	kincade@omrf.org
KISILOW Pawel	36	tatop@mac.com
KOSCO Marie	37	mkoscovilbois@gmail.com
LAMERS Marinus	38	Lamers@immunbio.mpg.de
LANZAVECCHIA Antonio	39	alanzavecchia@vir.bio
LASSILA Olli MD, Ph.D.	40	olli.lassila@utu.fi ollas@utu.fi
LEANDERSON Tomas	41	tomas.leanderson@med.lu.se
LEFKOVITS Ivan	42	ivan.lefkovits@unibas.ch
MACKAY Charles	43	c.mackay@me.com
MARCU Kenneth	44	Kenneth.marcu@stonybrook.edu
MAYR Wolfgang	45	wolfgang.mayr@meduniwien.ac.at
OHNISHI Kazuo	46	ohnishik@nih.go.jp
PALMER Ed	47	ed.palmer@unibas.ch
PIETERS Jean	48	jean.pieters@unibas.ch
PINK Richard	49	pinkr@mail.com
RAMMENSEE Hans-Georg	50	rammensee@uni-tuebingen.de
RAMSEIER Hansruedy	51	pfopf-hp-h.ramseier@ggaweb.ch
REYNAUD Claude-Agnes	52	claud-agnes.reynaud@inserm.fr
RIESEN Walter	53	wf.riesen@bluewin.ch
SAKAGUCHI Nobuo	54	nobusaka@kumamoto-u.ac.jp nobuosakaguchi@gmail.com
SALIO Mariolina	55	mariolina.salio@imm.ox.ac.uk
SCHEUERMANN Richard	56	rscheuermann@jcvi.org

Scientists (ABC Family Name Order)

SHULMAN Marc	57	marc.shulman@gmail.com
SIDMAN Charles	58	csidman@ecs-partners.com
STAERZ Uwe	59	ustaerz@greffex.com
UEMATSU Yasushi	60	uematsuya@yahoo.com
WALLNY Hans-Joachim	61	Hans-Joachim.wallny@novartis.com hjwallny@aol.com
WEILL Jean-Claude	62	jean-claude.weill@inserm.fr
WILSON Melane	63	mwilson@umc.edu
WINKLER Thomas	64	thomas.winkler@fau.de
WU Gill	65	gillwu@yorku.ca
Students	66-67	
BORGGREFE Tilman	68	borggreffe@ie.mpg.de
GHIA Paolo	69	ghia.paolo@hsr.it
JÄCK Hans-Martin	70	hjaeck@molmed.uni-erlangen.de
KIRBERG Jörg	71	Joerg.Kirberg@pei.de kirjo@gmx.de
PADOVAN Elisabetta	72	epadovan@ige.gulbenkian.pt
SCHMITZ Nicole	73	nicole.schmitz@actelion.com nicole.schmitz1@yahoo.com
ZIEGLER Andreas	74	ziegler-biosolutions@gmx.de
Staff	75-76	
ANQUEZ Viviane	77	viviane.anquez@roche.com
DANGY Jean-Pierre	78	p.dangy@unibas.ch
LANG Rosmarie	79	r.lang@libero.it
MARCUZ Anne	80	anne.marcuz@roche.com
RÜFENACHT Kim	81	kim.ruefenacht@intergga.ch
	82	

Workstudy Students

STEINBERG Adam	84	Adam.Steinberg@corsair.com
----------------	----	----------------------------

Visitors, Friends, and next generation**page****email**

SCHROEDER Timm

85

86 timmsc@ethz.ch

TYNDALL Alan

87

alan.tyndall@fps-basel.ch

Passaway

88

GISLER Roland

89

(+) ~~roland.gisler@intergga.ch~~

STEINBERG Charles

90

(+)

VON BORSTER Jack

91

(+) ~~vborstel@ualberta.ca~~

KUHN Lotte

92

(+) ~~lkuhn@balcab.ch~~**Appendix**

93

FOREVER Charley

94-95

by CHEN Una

ispiev@gmx.de

Scientists



Hochdruck / Highprint

Name: Claudia BEREK, Ph.D.

Current Institution-Affiliation-

Private Address:

Deutsches Rheuma Forschungszentrum, Berlin,
Chariteplatz 1, D-10117 Berlin, Germany

Email:

berek@drfz.de



What is your connection with the BII / The period of time you were in the BII:

Scientific Member May 1977 to September 1982

Some description of yourself to share:

As everybody will agree it was great fun to work at the BII, for me it was also the time when I had to take care of small children. When I came to Basel our son was 10 months and 9 months later our second son was born, but nevertheless, Niels supported and accepted me at the BII and this was quite unusual for the time. It allowed me to continue with science and opened the way for my career.

Name: Bjarne BOGEN, Ph.D.

Current Institution-Affiliation-

Private Address:

CoE Centre for Immune Regulation, Institute of Immunology, University of Oslo, Oslo University Hospital, Rikshospitalet, Postboks 4950 Nydalen, 0424 Oslo, Norway

email:

bjarne.bogen@medisin.uio.no



What is your connection with the BII / The period of time you were in the BII:

Scientific Member 1985, Visiting Scientist periods in 1986 – 1987

Some description of yourself to share:

During my stay at BII I first worked with Werner Haas on establishing idiotype (Id)-specific CD4+ T cells. Together with Ralph Snodgrass and Zlatko Dembic at BII, and Anton Berns in Amsterdam, we then made Id-specific TCR-transgenic mice. Together with Siggie Weiss at BII we studied antigen processing of Ig, and presentation of Id-peptides on MHC class II molecules. A major finding was that B cells spontaneously process and present their endogenous Ig. Together with Siggie Weiss, Ig-transgenic mice were made. By use of the TCR-transgenic and Ig-transgenic mice the concept of Id-driven T-B collaboration was developed.

Recent work has established that Id-driven T-B collaboration may play a role in autoimmunity and development of B cell lymphomas. In addition, my research group is working on tumor immunology and development of new formats of DNA vaccines.

Currently I am a professor of Immunology at The University of Oslo. In addition, I have a part-time position as senior consultant at Oslo University Hospital. I have had sabbaticals at Stanford University and Harvard University.

Privately, I enjoy family life with wife and three children, skiing, tennis, sailing and outdoor life.

Name: Una CHEN, Ph.D., M.A.

Current Institution-Affiliation-

Private Address:

President of ISPI e.V. (International Senior Professional Institut e.V. www.ispiev.org) and RESCUES (Research Experience of Stem Cells in Europe, www.rescue-society.org)
Grünbergerstrasse 124, D-35394 Giessen, Germany

email:

Una.Chen@gmx.de



What is your connection with the BII / The period of time you were in the BII:

Scientific Member 1986 - 1992

Some description of yourself to share:

Una was born and educated in Taiwan, received her Ph.D. in Immunology at the Univ of California at Berkeley USA, did a postdoc at the University of Würzburg, Germany, then joined the BII as a scientific member. After the time at the BII she spent one year as group leader at the Max Planck Institute in Erlangen Germany, one year as EC Fellow in Marseille, France, and returned to Germany to form her own group at the Univ of Giessen. She is interested in both science and the arts, characteristic of many people in the creative fields, spending her time in both and sometimes even more in art than science. Her scientific work covers molecular immunology and stem cell biology in which she has 60+ scientific publications. At the BII she shifted from mouse B cell molecular biology to mouse ES cells, and developed an efficient way to differentiate mES cells to lymphoid precursor cells in culture. After the time at the BII she focused her work on establishing and characterizing tetracycline/doxycycline responding mouse cell lines from transgenic mESC and transgenic mice brain, lung, and skin tissues. She is interested in the process of making clinical grade cell banks, spent two years working on how to make an affordable GMP grade master cell bank in an academic environment from 2000 to 2002, which was published in a book chapter on iPS and has 1000+ downloading of that article so far. She is contributing work to the scientific community. At the BII she served as the co-organizer of the BII-(Alumni)-Get-Together and organized Institute social events on the occasions of the Immunology Congress in Berlin 1989, Budapest 1992, San Francisco 1995, Montreal 1998, Stockholm 2001 and the Basel 2011 BII-at-40 events! Her other community work includes creation and serving as chairperson of the ISSCR (International Society for Stem Cell Research) International Committee from 2002 to 2003, creation and serving as president of RESCUES 2007 to the present, and creation and serving as president of the ISPI e.V., 2009 to the present. She has produced 100+ artworks. In addition, she exhibits regularly. From 2014 to 2017 she returned to Basel to study art and design at the FHNW (FachHochschule NorthWest) and received a M.A. in Design on the topics of KICE (Knoblauch Ingwer Citron Essig) drink. From 2014 to 2020 she was a Galeristin, heading Galerie in der Galerie (GiG) Neustädter Tor in Giessen, did art exhibitions for international artists in a rather unique show-window inside a shop, and edited 22 issues of catalogs including "StadtGiessen". During the COVID19 pandemic from 2020 to present, she worked in her home office on the manuscript preparation of results about mouse stem cells of lung, skin, and ES cells origin for publications. Now she is engaged in updating the e-book "who-is-who of bii" for the coming "BII-at-50" event.

Name: Zlatko DEMBIC, M.D., Ph.D.

Current Institution-Affiliation-

Private Address:

Professor, University of Oslo
Editor, Scand J Immunology
Department of Oral Biology
Dental Faculty, University of Oslo
Oslo, Norway

email:

zlatko.dembic@odont.uio.no



What is your connection with the BII / The period of time you were in the BII:

Scientific Member 1984 - 1986

Some description of yourself to share:

Since the earliest days of my lab career I was attracted to molecular and cellular immunology. I wished to understand the function of the immune system, and that is still my wish. During the last twenty years of the past century I've worked on projects in immunology at the Max-Planck-Institute for Biology (Tubingen, Germany), the Basel Institute for Immunology (Switzerland; Switzerland) and the Hoffmann - La Roche AG (Basel, Switzerland) with numerous collaborators. We were the first to report the identification of genes underlying T-cell specificity and recognition (mouse T-cell receptor, in 1986). At Hoffman-La Roche AG, I participated in research on molecular cloning of human cytokine receptors important for the effector phase of immunity such as the interferon-gamma receptor (IFNGR1; in 1988) and the tumor necrosis factor receptor-2 (TNFR2; in 1990). In 1995, I moved to the Institute of Immunology at the University of Oslo, Norway. Since then I broadened my research to include cancer immunology and immunogenetics. All of this would not have been possible without a substantial contribution from my academic collaborators and colleagues in Norway and Croatia. Some of these studies led me to propose a model about the workings of the immune system called the "integrity" model in the mid-nineties. It stresses that immunity is not only a defense system, but also a "selector and caretaker" of potential symbionts and commensals. My publication list has over 80 scientific contributions, with about ten percent published in Nature and Cell. I tend to take these achievements as evidence of the great fun and joy that basic research in immunology has given me over the past years. They are also the source of an unending motivation to study further what remains unknown - a progressively smaller part of human body.

Name: Gennaro DE LIBERO, M.D., Ph.D.

Current Institution-Affiliation- Private Address:

Professor of the
Departement Biomedizin at the University of Basel
Hebelstrasse 20, 4031 Basel, Switzerland

Tel: +41 61 265 23 65

email:

gennaro.delibero@unibas.ch



What is your connection with the BII / The period of time you were in the BII:
Scientific Member, February 1988-April 1990

Some description of yourself to share:
[Links Unibas.ch](https://www.unibas.ch)

Name: Louis DU PASQUIER, Ph.D.

Current Institution-Affiliation- Private Address:

Professor Emeritus

Department of Environment Sciences, Institute of Zoology, at the University of Basel

Vesalgasse 1 / Sonnenbergstrasse 60

CH-4051 Basel, Switzerland

Tel: +41 61 331 7275

email:

louis.dupasquier@unibas.ch,

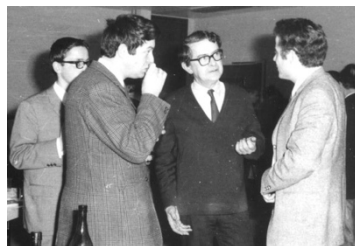


What is your connection with the BII / The period of time you were in the BII:

Senior Scientific Member, 1971 – 2000

Some description of yourself to share:

Links: unibas.ch



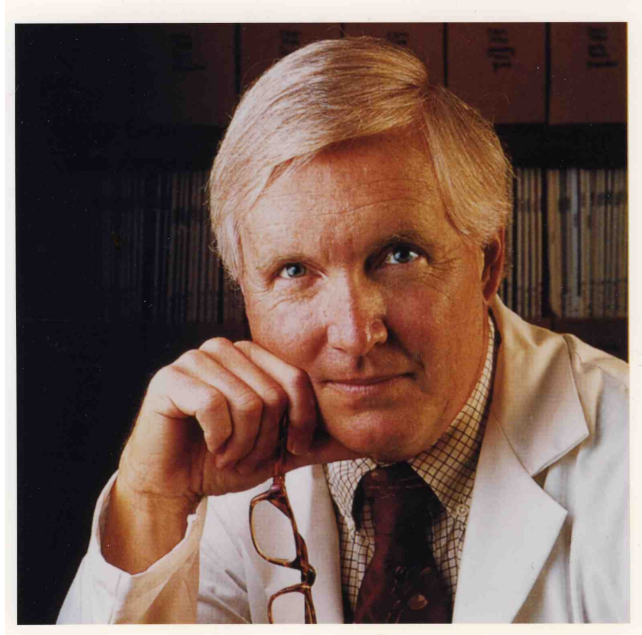
Name: C. Garrison FATHMAN, M.D.

Current Institution-Affiliation-Private Address:

Chief, Division of Immunology and Rheumatology, Stanford University School of Medicine
269 Campus Drive, CCSR Room 2225
Stanford, CA 94305-5166, USA

email:

cfathman@stanford.edu



What is your connection with the BII / The period of time you were in the BII:
Scientific Member 1975-1977

Some description of yourself to share:

Dr. Fathman is Professor of Medicine and Chief of the Division of Immunology and Rheumatology at Stanford University School of Medicine and Associate Director of the Institute for Immunology, Transplantation and Infection (ITI) and Director of the Center for Clinical Immunology at Stanford (CCIS). He was founder and first-president of the Federation of Clinical Immunology Societies (FOCIS). His substantial scientific contributions in the areas of cellular and molecular immunology have brought him international recognition. As Director of the CCIS, he initiated a multidisciplinary approach to study and treat autoimmune diseases, including rheumatoid arthritis, multiple sclerosis, and insulin-dependent diabetes mellitus, and initiated several new approaches to education and community outreach. Dr. Fathman received his degree from Washington University in St. Louis in 1969. He subsequently completed his residency training at Dartmouth Affiliated Hospitals and completed a fellowship in immunology and rheumatology at Stanford University. He then spent four years doing research, first as a clinical associate at the National Cancer Institute of the NIH, and then as a member of the Basel Institute for Immunology in Switzerland. He returned to the US to join the faculty at the Mayo Clinic Medical School in 1977 and was recruited back to Stanford University in 1981. He is a member of many professional organizations, including the American Association of Immunologists (AAI) and the Association of American Physicians (AAP), and is past council member of the American Society for Clinical Investigation (ASCI) and past-President of the Clinical Immunology Society (CIS). He was Associate Editor of the *Annual Review of Immunology* for 25 years and serves on the editorial boards of numerous scientific journals. Dr. Fathman has chaired a variety of national and international professional meetings, served on NIH study sections and numerous blue ribbon panels and has written more than 300 articles on his research in molecular and cellular characterization of CD4 T cell activation and unresponsiveness.

Name: Martin FLAJNIK, Ph.D.

**Institution-Affiliation-
Private Address:**

Dept. of Microbiology and Immunology
University of Maryland at Baltimore
Suite 380, 685 West Baltimore Street
Baltimore, MD 21201 USA
Tel.: +1 410-706-5161
Fax: +1 410-706-2129

email:

mflajnik@som.umaryland.edu



**What is your connection with the BII / The
period of time you were in the BII:**

Student 1982-83, Scientific Member (postdoc with Louis Du Pasquier), 1983-1988

Some description of yourself to share:

Since leaving Basel I was on the faculty of the University of Miami in Florida (1988-98) and then moved to the University of Maryland, School of Medicine (1998-present). I have been interested in the evolution of adaptive immunity for my entire career.



at jitsi video conference, 10th. 06.2021

Name: Donald F. GERSON, Ph.D.

**Current Institution-Affiliation-
Private Address:**

CEO

PnuVax, Inc. 134 Albert St.

Ontario, K7L3V2, Canada

Tel: +1 613 539 4004,

Fax: +1 613 249 7462

www.pnuvax.com

email:

dongerson@pnuVax.com



What is your connection with the BII / The

period of time you were in the BII:

Scientific Member 1979-1982

Some description of yourself to share:

Don has produced most of the common vaccines including DTP, BCG, measles, polio, typhoid, rabies, cholera, and has been responsible for the final-stage development and manufacturing of the world's first conjugate vaccines for Haemophilus b, Conjugate, Adult Pneumococcal vaccine, the world's first children's pneumococcal conjugate vaccine (Prenar), the world's first meningococcal conjugate vaccine, Measles, both oral and injected polio vaccines, Rabies, Typhoid, Cholera, and a number of pre-clinical and clinical vaccines for HIV, malaria and other diseases. He has designed and constructed many biotech facilities around the world. He has numerous publications and patents in various areas of biotechnology, including biophysics, cell physiology, immunology, biochemical engineering, vaccine development, and biologicals manufacturing.

Recent Publications:

- Gerson, D., 2005. Safety Guides New Syringe Designs. Pharmaceutical Manufacturing, 4(4):67-71.
- Gerson, D. F. and Mukherjee, B., 2005. Manufacturing process Development for High-Volume, Low-Cost Vaccines. BioProcess International (4):42-48.
- Demain, A.L., Gerson, D.F. and Fang, A. 2005. Effective levels of Tetanus Toxin can be made in a production Medium totally lacking both animal (e.g., brain heart infusion) and dairy proteins or digests (e.g., casein hydrolysates). Vaccine 23 (46-47):5420-5423.
- Gerson, D. F., 2008. Paradigm Change in Bio-Manufacturing. Contract Pharma, May 2008, p. 64-71.
- Fang, A., Gerson, D F. and Demain, A. L., 2009. Production of *Clostridium difficile* toxin in a production medium totally lacking both animal and dairy proteins or digests. Proc Nat Acad Sci (USA) 106(32): 13225–13229.
- Pulendran, B., et al., 2010. Novel Approaches, including Systems Biology, to HIV vaccine research and development: Report from a Global HIV Vaccine Enterprise Working Group. Nature Proceedings 4798:2-3.

Name: Ursula (Ulla) GÜNTHERT, Ph.D.

Institution-Affiliation-

Private Address:

Professor
Institut für Pathologie
Universitätsspital Basel
Schönbeinstrasse 40
CH-4003 Basel, Switzerland

and
Achter Höfe 55
D-29472 Damnatz, Germany
www.kulturtenne-damnatz.de

email:

ursula.guenther@unibas.ch



What is your connection with the BII / The period of time you were in the BII:
Scientific Member 1991-2001

Some description of yourself to share:

Ursula Günthert obtained her PhD in microbiology at the University of Tübingen, Germany. She did her postdoctoral training at the Max Planck Institute for Molecular Genetics in Berlin where she studied the function of DNA methyltransferases and the effect of DNA methylation on gene regulation. In 1984 she became senior scientist at the Institute for Genetics at the Research Centre Karlsruhe, Germany. Searching for molecules involved in the process of metastasis, she identified the CD44 variant isoforms and their importance for tumor metastasis. She joined the Basel Institute for Immunology as a member in 1991 and obtained her habilitation in 1995 at the University of Munich. After the closure of the Basel Institute for Immunology she moved to the Institute for Medical Microbiology in Basel and in 2001 obtained the lectureship for the Basel University (Umhabilitation) in 2002. From 2007 till 2010 research was continued at the Institute of Pathology, Basel when she received the Titularprofessor for immunology. CD44 remained the main research focus in Ursula Günthert's studies. Her group has investigated the functional implications of CD44 variant isoforms in autoimmunity (mouse models for colitis, experimental autoimmune encephalomyelitis, rheumatoid arthritis), carcinogenesis and haemopoiesis.

At the end of 2010 Ursula retired and in February 2011 moved to North Germany to found the Kulturtenne in Damnatz, her new home: www.kulturtenne-damnatz.de

Name: John HAMILTON, Ph.D.

Current Institution-Affiliation-

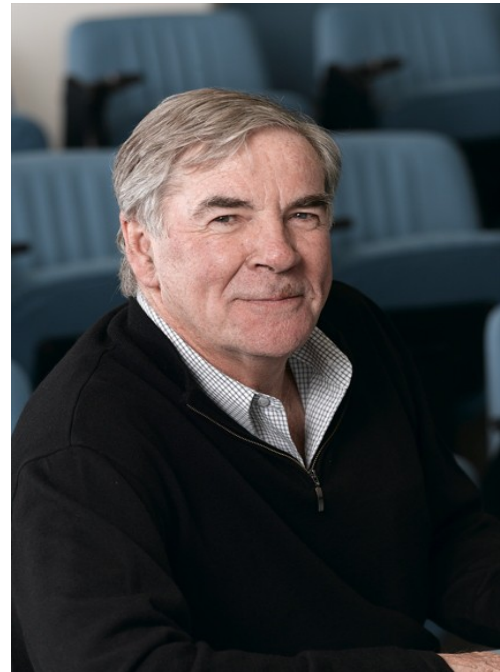
Private Address:

Professor
University of Melbourne, Department of Medicine,
The Royal Melbourne Hospital PO, Victoria 3050,
Australia

Private: 6 Aberdeen Street, Aberfeldie, Victoria 3040,
Australia

email:

jahami@unimelb.edu.au



What is your connection with the BII / The

period of time you were in the BII:

Scientific Member March 1972 - June 1973 with Jacques Miller

Some description of yourself to share:

Following my Ph.D. studies at the University of Melbourne, and post-doctoral training at the Australian National University and the Walter and Eliza Hall Institute, I worked at the BII and the Ontario Cancer Institute, and for 7 years in New York at Rockefeller University and Sloan-Kettering Cancer Center. I then returned to the University of Melbourne where I was awarded a Doctor of Science Degree (1990), and appointed Professorial Fellow (1993) and Director, Arthritis and Inflammation Research Centre (1997).

In 2001, I became founding CEO of the Cooperative Research Centre for Chronic Inflammatory Diseases, a multinational consortium linking academic institutions and industry. I am a Professorial Fellow and Deputy Head of the Department of Medicine, University of Melbourne, Royal Melbourne Hospital, and a National Health Medical Research Council of Australia Senior Principal Research Fellow.

My major overall research contribution is in cytokine-mediated functions of macrophage lineage cells in inflammation, particularly in arthritis.

Name: John HANSEN, Ph.D.

Current Institution-Affiliation-

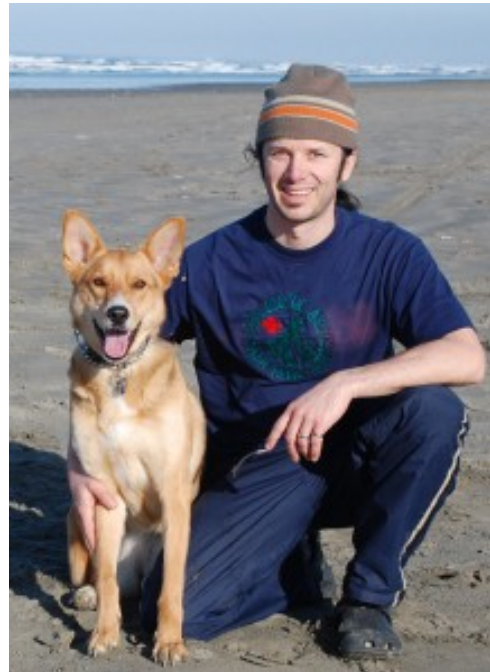
Private Address:

Immunology Group Leader
Global Health and Pathobiology
University of Washington
Western Fisheries Research Center
6505 NE 65th Street
Seattle, WA 98115 USA

<http://profile.usgs.gov/jhansen/>

email:

jhansen@usgs.gov
jdh25@uw.edu



What is your connection with the BII / The period of time you were in the BII:
Scientific Member 1995-2000

Some description of yourself to share:

My group focuses on immune responses to infection in fish and the impact of environmental chemicals on immune response potential. In general, our group utilizes both functional genomic and molecular/cellular approaches to investigate the regulation of genes and protein interactions that occur during infection. To better appreciate these interactions; we have also developed specific research projects that utilize zebrafish in addition to our work with [sSalmon](#). Zebrafish present an attractive model for studies involving fish and vertebrate health owing to the ease of breeding and maintaining stocks of fish and the availability of specific tools including a finished genome, comprehensive microarrays, gene knockouts/knockdowns and transgenic animals for specific immune-related genes. Current projects using zebrafish include models to assess pathogenesis mediated by *Francisella* species, functional roles of the zebrafish inflammasome and the impact of endocrine disruptors on vertebrate health. These research efforts have translational value for human health as well, as our comparative approach can lead to the identification of key virulence factors and essential components of host immunity that are conserved across all vertebrates. Ultimately, our goal is to better understand how pathogens and host immune responses contribute to pathogenesis &/or immunity and how this information can be applied to vertebrate health.

On a personal side, my family (Brenda & my son Keagen-12 and my daughter Mina-9) have been living in Seattle since 2004 and will likely be here until the end—as the city, people and surrounding areas have all of the features that are important to my family. This includes being surrounded by both the Cascade and Olympic mountain ranges, which are great areas of escape for backcountry camping, hiking, climbing and snowboarding. In addition, the Pacific Ocean and Olympic National Forest are close by and importantly—Seattle is a very livable, liberal city. If you are ever in Seattle, feel free to call on us as our doors are always open to fellow BII alumni.

Name: Hans HENGARTNER, Ph.D.

**Current Institution-Affiliation-
Private Address:**

ETH Zurich and
University of Zürich

Oberrenggstr. 15,
CH-8135 Langnau a./A.
Switzerland

email:

hans.hengartner@usz.ch



**What is your connection with the BII / The
Period of time you were in the BII:**
Scientific Member 1975 – 1980

Some description of yourself to share:
Professor Emeritus
Please see PUBMED for publication list.

Name: Christoph HEUSSER, Ph.D.

Current Institution-Affiliation-

Private Address:

Swiss Rockets AG

Private Address:

Goldenthalweg 9

4104 Oberwil

Switzerland

email:

c.heusser@intergga.ch



What is your connection with the BII / The

period of time you were in the BII:

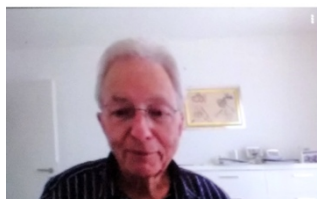
Scientific Member 1976 - 1979:

Some description of yourself to share:

Retired and working part time as Head Immunology at Swiss Rockets, dealing with various projects.

Former Principle Research Investigator at Novartis Institutes of Biomedical Research in Autoimmune Diseases and Transplantation and earlier in Allergy and Inflammation, specialized in the identification of intervention strategies and suitable drug targets for therapeutic biologicals – e.g. engineered monoclonal antibodies - and leading and coaching preclinical research projects towards development.

I am looking forward to see all my colleagues from the time at BII



at jitsi video conference 10th.06.2021

Name: Georg HOLLÄNDER, M.D.

Current Institution-Affiliation- Private Address:

Professor of the Departement Biomedizin at the University of Basel,
Mattenstrasse 28, 4058 Basel, Switzerland

Tel: +41612075069

email:

georg-a.hollaender@unibas.ch



What is your connection with the BII / The period of time you were in the BII:

1983 Student

1985 Postdoctoral Fellowship

1987 Visiting Scientist

Some description of yourself to share:

2003-current as professor of pediatric immunology at the University of Basel.

Links: <https://biomedizin.unibas.ch/en/persons/georg-hollaender/>

Name: Nobumichi HOZUMI, M.D., Ph.D.

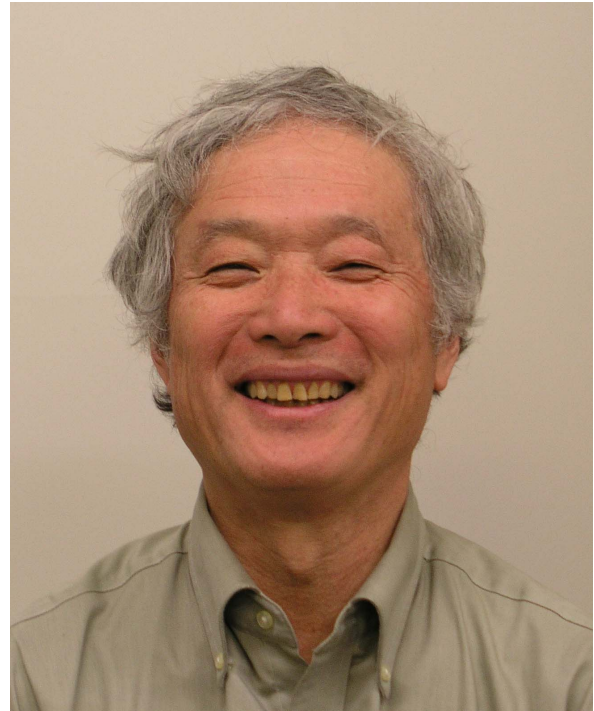
Current Institution-Affiliation- Private Address:

Saito Clinic (Psychiatry), Japan

Private Address: 448-7 Higashifukai, Nagareyama-shi, Chiba-ken 270-0101 Japan

private email:

incdivnob@gmail.com



What is your connection with the BII / The period of time you were in the BII:

Scientific Member, Feb. 1975 ~ Aug. 1978

Some description of yourself to share:

At BII, I had collaborative works with Gaston Mattheysens, Susumu Tonegawa and Ora Bernard. My contribution to immunology was the discovery of rearrangement of immunoglobulin genes. I moved to Toronto in 1978 and met Marc Shulman there. Marc was a neighbor at BII. The reunion was a very important event for me. Marc and Georges Köhler invented an ingenious method (suicide method) to obtain mutants of the expression of immunoglobulin genes. I worked in Toronto until 2000. I had labs at Ontario Cancer Institute and Mount Sinai Hospital. We had intimate collaborative studies. The experience was very enjoyable. I was lucky to have met Marc. I had an offer to set up a lab at Biological Institute of Tokyo University of Sciences in 1996. The new Institution was at the helm of Tomio Tada. I commuted over the Pacific Ocean from 1996 to 2000.

I was a professor at the Department of Health Sciences of Ryotokuji University from 2010 to 2016. My long standing goal was to become a psychiatrist. When I graduated from Med. School, psychiatry looked too complicated to me. I had a difficulty to understand the molecular mechanisms involved in human behavior and psychology. Molecular biology was simple and straightforward. I jumped into molecular biology.

After 50 years, I began to sail to journey to the final destination.

Name: M. Beat IMHOF Ph.D.

Current Institution-Affiliation- Private Address:

Professor Emeritus

Department of Pathology and Immunology, Faculty of Medicine, CMU

Rue Michel-Servet 1, CH-1211 Genève 4, Switzerland

Tel: +41 79 3753779

Private Address: Laubeggstrasse 54, 3006 Bern, Switzerland

email:

beat.imhof@unige.ch

private email:

b.a.imhof@bluewin.ch

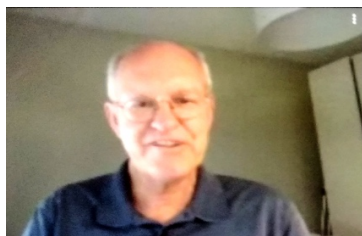


What is your connection with the BII / The period of time you were in the BII:

Scientific Member, 1988-1997

Some description of yourself to share:

Beat A. Imhof is professor emeritus and was chair of the Department of Pathology and Immunology for more than 10 years at the Medical Faculty, University of Geneva, Switzerland. He studied Biochemistry in Zurich, Switzerland, did then his PhD at the Friedrich Miescher Laboratory of the Max Planck Institute in Tübingen, Germany (1983) where he studied cell-cell contacts. He moved as an EMBO fellow to Paris at Institute of Embryology where he worked on thymus homing of T-cell progenitor cells. In 1988, he joined the Basel Institute for Immunology, Switzerland, where he continued to study the migration of pro-T cells to the thymus. In 1997, he accepted a position as Professor for Experimental Pathology at the Medical Faculty of the University of Geneva. He investigated the pathology of leukocyte migration in inflammatory diseases and studied tumor angiogenesis. In this context he found several novel molecules and mechanisms, for several he holds patents together with the University of Geneva. He is a cofounder of the start-up companies Abologix and Mesenflow and he is in the board of AltaZuz and Neurix



at jitsi video conference 10th 06.2021

Name: Heinz JACOBS, Ph.D.

Current Institution-Affiliation-Private Address:

The Netherlands Cancer Institute
NKI-AVL
Division Immunology
Plesmanlaan 121
1066 CX Amsterdam
The Netherlands

Schützengraben 25
D-52538 Gangelt
Germany

Bonairestraat 97h
1058 XG Amsterdam
The Netherlands

email:

h.jacobs@nki.nl

What is your connection with the BII / The period of time you were in the BII:

Scientific Member February 1997- May 2001

Some description of yourself to share:

Research Interest: Programmed Mutagenesis, Allelic exclusion, Epigenetics

- Study: Biomedical Sciences, Immunology, Biochemistry and Cell Biology, Philipps-University of Marburg, Germany.
- Master thesis 'Molecular and Biochemical Characterization of the Feline MHC', thesis advisor Hidde Ploegh, NKI-AVL, The Netherlands Cancer Institute, The Netherlands.
- PhD thesis 'Control of T Cell Development in TCR Mutant Mice', PhD thesis advisor Anton Berns, The Netherlands Cancer Institute, The Netherlands.
- EMBO Long-term PostDoc Fellow, Institute for Genetics, Department of Klaus Rajewsky University of Cologne, Germany.
- Member, Basel Institute for Immunology, Switzerland.
- University Docent, Research Inst Growth & Development University of Maastricht, The Netherlands.
- Research Group Leader, Div. Immunology, NKI-AVL, The Netherlands Cancer Institute, The Netherlands.

Name: Michael JULIUS, Ph.D.

Current Institution-Affiliation-

Private Address:

Vice President

Research Sunnybrook Health Sciences Centre &
Professor, Departments of Immunology
and Medical Biophysics, Faculty of Medicine
University of Toronto, Canada

Tel.: Direct: +1 (416) 480-4650

Exec Assistant Tel: +1 (416) 480-6100 Ext: 7204

Fax: +1 (416) 480-4351

www.sunnybrook.ca/research

email:

michael.julius@sri.utoronto.ca



What is your connection with the BII / The

period of time you were in the BII:

Scientific Member 1976-1988

Some description of yourself to share:

Michael received an Honours B.Sc. degree in genetics from McGill University in Montréal, Quebec, and went on to do his doctoral work at Stanford University in Palo Alto, California culminating in a Ph.D. in genetics and immunology. He was recruited as a member of the Basel Institute for Immunology, Switzerland, where he spent 12 years of postdoctoral study analysing the molecular and cellular components of the immune system. In 1988 he assumed an Associate Professorship in the Department of Microbiology and Immunology at McGill University in Montréal, Quebec. Recruited to the position of Professor and Chair of the Department of Immunology at the University of Toronto in 1993, over the next 7 years he stewarded the Department to its ranking as the pre-eminent academic immunology initiative in Canada, externally ranked among the top 10 academic centres of Immunology in North America. His work towards understanding the biochemistry of lymphocyte activation, and the cellular and molecular interactions culminating in protective immunity have supported his continuing interest in autoimmune diseases, and ailments that involve dysregulated function of the immune system. Academic Press, now Elsevier, engaged Michael as the Editor of the highly cited review periodical, *Seminars in Immunology*. In October 2000, Michael assumed the position of Vice President, Research, Sunnybrook Health Sciences Centre, where he stewards a \$100M annual research enterprise [<http://www.sunnybrook.ca/research>]. He has chaired the Canadian Institutes for Health Research review panel for "Immunology and Transplantation", and serves as a member of Scientific Advisory Boards for a number of for profit enterprises. Michael was elected Vice Chair of the Board of Directors of Research Canada in April 2007, and assumed the Chair of Research Canada in May 2008. Research Canada is a not-for-profit, voluntary organization that is a strong national voice for health research advocacy in Canada [<http://www.rc-rc.ca/>].

Please see PUBMED for publication list.

....."You can yell at me if it helps", said Michael, "and big hug to everybody in the BII-at-40 and BII-at-50 celebrations".

Name: Zoher F. KAPASI, Ph.D.

Current Institution-Affiliation-Private Address:

Department of Rehabilitation Medicine
Division of Physical Therapy
Emory University School of Medicine
1462 Clifton Road, N.E
Suite 312
Atlanta, GA 30322 USA
Tel: +1 404-712-5671
Fax: +1 404-712-4130

email:

zkapasi@emory.edu

**What is your connection with the BII / The
period of time you were in the BII:**

Visiting Scientist March-August 1992, with Marie Kosco-Vilbois

Some description of yourself to share:

Associate Professor and Director
Division of Physical Therapy
Chief of Outpatient Development

Name: Klaus KARJALAINEN, Ph.D.

Current Institution-Affiliation- Private Address:

Professor of the
Nanyang Technological University
50 Nanyang Avenue, 639798 Singapore

email:

Klaus@ntu.edu.sg



What is your connection with the BII / The period of time you were in the BII:
Senior Scientific Member, 1983-2000

Some description of yourself to share:

Links: Nanyang Technological Uni Singapor

Name: Hajime KARASUYAMA, M.D.

Current Institution-Affiliation-

Private Address:

Department of Immune Regulation
Tokyo Medical and Dental University
Graduate School, 1-5-45 Yushima, Bunkyo-
ku, Tokyo 113-8519, Japan

email:

karasuyama.mbch@tmd.ac.jp



**What is your connection with the BII / The
period of time you were in the BII:**

Scientific Member 1984-1987, 1990-1995

Some description of yourself to share:

I was a BII member twice. People in BII used to call me 'Karas' instead of my first name 'Hajime', because German-pronunciation of 'Hajime' sounds like 'Haime' (or Jaime in Spanish?) not like 'Hi Jimmy!'. During my first stay in BII, I developed an efficient cDNA expression vector pBCMNeo and its derivatives, and established a series of transfected cell lines secreting high amounts of recombinant cytokines, including IL-2, IL-3, IL-4 and IL-5. I am very happy about that these vectors and cell lines have been distributed to many institutes and universities around the world, and are still utilized by thousands of researchers. In the second stay, I worked on pre-BCR, and demonstrated that the pre-BCR complex is indeed composed of three polypeptides (VpreB, lambda5, and μ H chain) and expressed transiently at the early preB cell stage during B cell development, by establishing triple transfectants and mAbs specific to each component of pre-BCR. After return to Tokyo, I extended my interests to allergy and immunodeficiency in addition to B cell development. Major topics in my laboratory are now basophils and hyper-IgE syndrome (for more detail, please visit our web site: http://www.tmd.ac.jp/med/mbch/top_English.htm).

My wife Reiko and I have two daughters who were two years- and 8 month-old at our first arrival in Basel and used to fluently speak to each other with Swiss German, although they now remember only a few words. We all miss Basel a lot, including Basler Fasnacht.

Name: Jim KAUFMAN, Ph.D.

Institution-Affiliation-Private Address:

Professor of Comparative Immunogenetics

University of Cambridge

Department of Pathology, Tennis Court Road, Cambridge, CB2 1QP UK
and

Department of Veterinary Medicine, Madingley Road, Cambridge, CB3 0ES UK

+44-1223-766423 (office in Pathology)

email:

jfk31@cam.ac.uk

What is your connection with the BII / The

period of time you were in the BII:

Scientific Member 1981-1995

Some description of yourself to share:

After leaving the BII with Gillian Griffiths, a biting cat, a large map of Basel, a piece of stained glass, a jar of pickled lampreys and a dozen boxes from lab (some of which I have just managed to unpack), we lived out in the wilds of Berkshire in villages dating back to the Domesday book. Gillian commuted to her swank new institute at University College London, and I ran a Department of Avian Immunology (along with my own lab) at a nearby government establishment called the Institute for Animal Health. After some years, we had been joined by a new cat and two kids named Jonathan (now 14 and taller than I am, not that that is saying much) and Christopher (now 11 and catching up fast), a new job for Gillian (a professor at the very famous Dunn School of Pathology in Oxford) and a debilitating rise up the greasy hierarchy at the IAH for me.

Eventually, it was all too much for me, and we moved to Cambridge, where Jonathan is getting ready for GCSEs at King's School Ely, playing double bass and Real Tennis, rowing and climbing, Christopher is learning French and Latin at King's College School, singing in and touring with the Jesus College choir, and playing flute and piano, Gillian is a Professor at the very swank Cambridge Institute for Medical Research (as well as a highly sought-after Wellcome Trust PRF), and I am the Professor of Comparative Immunogenetics in the Department of Pathology. We live in a big white house in Trumpington, can cycle to work and school, and have just started our vegetable garden for the year.

Name: Stefan H.E. KAUFMANN, Ph.D.

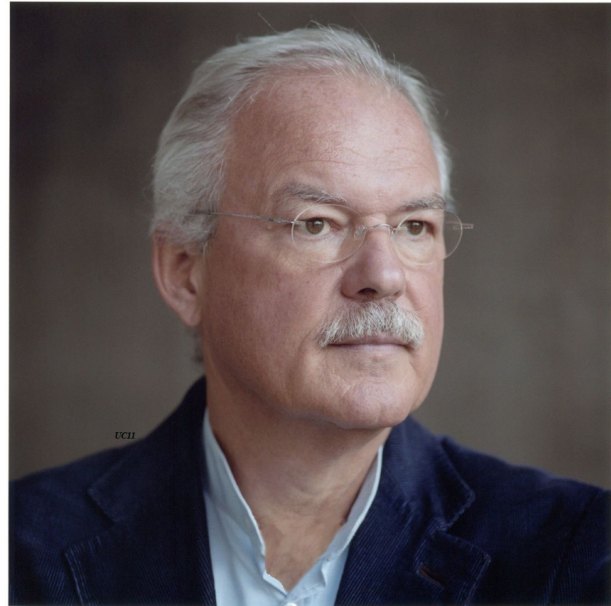
Current Institution-Affiliation-

Private Address:

Director Emeritus
Max Planck Institute for Infection Biology,
Charitéplatz 1, D-10117 Berlin,
Germany

email:

Kaufmann@mpiib-berlin.mpg.de



What is your connection with the BII / The period of time you were in the BII:
Visiting Scientist 1981

Some description of yourself to share:

Founding director and director of the Department of Immunology of the Max Planck Institute for Infection Biology in Berlin. Professor for microbiology and immunology at the Charité, Humboldt University, Berlin, and honorary professor at the University Clinics Benjamin Franklin, Free University Berlin. Past president and honorary member of the German Society for Immunology. Past President of the European Federation of Immunological Societies (EFIS). President of the International Union of Immunological Societies (IUIS). Born 1948 in Ludwigshafen am Rhein. Studied biology at the Johannes Gutenberg University of Mainz, 1977 Ph.D. (highest degree, summa cum laude). From 1987 to 1991 professor for medical microbiology and immunology, and from 1991 to 1998 full professor for immunology at the University of Ulm. Scientific interests: immunity to bacterial pathogens with emphasis on tuberculosis and rational vaccine design. Co-Developer of a recombinant BCG-vaccine candidate which has passed phase I-clinical trial successfully. Representative of research and technological health institutes as Alternate Board Member of GAVI Alliance (Global Alliance for Vaccines and Immunization). Initiated the Day of Immunology to raise public awareness in immunology. Numerous scientific awards (e.g. A. Krupp Prize for Young Professors, 1987, Aronson Prize of the state of Berlin 1988, Young Investigator Award (1983) and Investigator Award (1993) of the German Society for Hygiene and Microbiology). Doctor Honoris Causa from Université de la Méditerranée, Aix-Marseille II. Coordinator of several international and interdisciplinary projects including Grand Challenge 6 by the Bill and Melinda Gates Foundation. More than 600 publications mostly in high-ranking journals. Highly cited immunologist (ISI Thomson). Editor or member of editorial boards of more than 20 international scientific journals. Member of various professional societies, e.g. German Society for Immunology, American Academy of Microbiology, Berlin-Brandenburg Academy of Sciences, and German Academy of Natural Sciences 'Leopoldina' and World Innovation Foundation, Past President and Honorary Member of the German Society for Immunology. Immunology (DGfI), Past President of the European Federation of Immunological Societies (EFIS), and Past President of the International Union of Immunological Societies (IUIS). See also Wikipedia

Name: Gorden KELLER, Ph.D.

Current Institution-Affiliation- Private Address:

Director, Research Institute, McEwen Stem Cell Institute
MaRS Centre, Toronto Medical Discovery Tower
College St. Toronto, Ontario, Canada

Tel: + 416 450 9635

email:

gordon.keller@uhnresearch.ca



What is your connection with the BII / The period of time you were in the BII:

Scientific Member, 1983-1988

Some description of yourself to share:

Links: McEwen Stem Cell Institute, ca

Name: Jack Kettman, Ph.D.

Current Institution Affiliation

-Private Address:

Professor Emeritus,
University of Texas Southwestern
Med Center,
Dept of Immunology.

Texas Residence: 2828 Hood
street, Res. 1104, Dallas, Texas,
75219 USA

www.jacksbeadtalk.com

email:

jack_kettman@msn.com

private email:

jackkettman@gmail.com



What is your connection with the BII / The

period of time you were in the BII:

Scientific Member June 1972 – June 1973, Visiting Scientist periods 1979 – 2001.

Some description of yourself to share:

Jack's History; an alphabetic journey.

Plan A: Immunology research. 1966 until 1995 when no longer supportable.

Plan B: Teaching, Coordinator Medical Microbiology Course, Southwestern Medical School, retired 2000.

Plan C: Enterprise.

Founder of Luminex Corporation, 1995, Austin Texas.

Founder, Radix BioSolutions, 2003, Georgetown Texas.

Plan D: Personal research lab, Sebastopol Calif.

Plan E: ?

Name: Paul KINCADE, Ph.D.

**Current Institution-
Affiliation-**

Private Address:
Vice President for
Research
Oklahoma Medical
Research Foundation,
825 N.E. 13th Street,
Oklahoma City, OK
73104, USA

email:
kincade@omrf.org



**What is your
connection with the BII / The
period of time you were in the BII:**
Visiting Scientist, six months sabbatical in 1999

Some description of yourself to share:

We continue to explore relationships between hematopoietic stem cells and the immune system. The Program I lead has eight laboratories and I also serve as Vice President for Research in my private not-for-profit research institute. Though not comparable to BII, we do have a \$60M annual budget, a new research tower and 500 employees. There is also an Oklahoma Center for Adult Stem Cell Research, and I am the founding Scientific Director.

Name: Pawel KISIELOW, Ph.D.

Current Institution-Affiliation-

Private Address:

Professor
Institute of Immunology and Experimental
Therapy, 53-114 Wroclaw, ul.
Weigla 12- Poland

Private: 55-040 Bielany Wroclawskie,
ul Dwa Swiaty 23/2b Poland

email:

tatop@mac.com



What is your connection with the BII / The period of time you were in the BII:

Permanent Short Term Visitor 1981; 1984-1985; 1987-1989, Scientific Member 1991- 2001

Some description of yourself to share:

Because over the years I worked at BII several times for different periods of time I had a unique status of a “permanent short term visitor“ as I called it, a position „in between “ officially recognized positions of Permanent Members, Members, visitors and students.

My research concentrated on studying T cell development and selection. Working for most of the time with Harald von Boehmer, who kindly kept inviting me and my students (Wojtek Swat, Leszek Ignatowicz and Arek Miazek) from 1981 to 1991 we had a chance to participate in and to contribute to the studies which provided evidence that immature CD4+8+ thymocytes undergo positive and/or negative selection, as a result of which useful repertoire of self tolerant and self MHC restricted T cell receptors is generated.

Our finding that the specificity of T cell receptor for the class of MHC molecules determines CD4/CD8 phenotype of generated T cells was for me especially pleasing because it threw important light on how CD4 (Ly1+2-) and CD8 (Ly1-2+) T cells, which I identified 13 years ealier (Nature 253: 219, 1975), are born in the thymus.

During may last year at BII, together with my other student Ma gorzata Cebrat, we identified Nwc, a third strongly evolutionarily conserved gene within the Rag locus, which we are now intensively investigating.

Name: Marie KOSCO-VILBOIS, Ph.D.

Current Institution-Affiliation- Private Address:

Chief Scientific Officer of AC Immune SA.
33 Cold Spring Rd, Trenton, NJ 08619, USA

private email:

mkoscovilbois@gmail.com



What is your connection with the BII / The period of time you were in the BII:

Scientific Member, 1989-1994

Some description of yourself to share:

Links: AC Immune SA.

Name: Marinus LAMERS, Ph.D.

Current Institution-Affiliation-

Private Address:

Group Leader
Max-Planck-Institut für Immunbiologie
Stübeweg 51
D-79108 Freiburg
Germany

email:

Lamers@immunbio.mpg.de



What is your connection with the BII / The period of time you were in the BII:

Scientific Member 1980, with Georges Köhler

Some description of yourself to share:

I am still working in immunology. My last project, before retirement, is an old-time favorite of mine: the immune response to a parasite, i.e. *Schistosoma mansoni*. This worm challenges the immune system at different interfaces and in many ways. It is my last chance to see if I learned anything about the immune system in my life as an immunologist.

And indeed, the worm taught me again something I already knew: the herd instinct of many scientists is phenomenal, they are nothing special in this regard. But apart from that, the worm is also quite clever, in its way: evolution, the second lesson I already knew, is hard to beat. Is there anything new? I do not know, as yet...

Now retired

Name: Antonio LANZAVECCHIA, M.D.

Current Institution-Affiliation- Private Address:

Senior Vice President, Senior Research Fellow, Humabs/Vir Biotechnology, Bellinzona and San Francisco, Via dei Gaggini 3, CH 6500 Bellinzona, Switzerland

Retired Director of the Institute for Research in Biomedicine in Bellinzona, Switzerland

Professor in the faculty of biomedical sciences at the Università della Svizzera italiana, Italy

Tel: +39 02 00 660 300

email:

alanzavecchia@vir.bio



What is your connection with the BII / The period of time you were in the BII:

Senior Scientific Member, 1983-2000

Some description of yourself to share:

Links: vir.bio, Università della Svizzera italiana

Name: Ivan LEFKOVITS, Ph.D.

Current Institution-Affiliation- Private Address:

Professor Emeritus

Department of Research, University Clinics Basel, and
Physiology Institute of University Basel, Vesalianum, Vesalgasse 1,
CH 4051 Basel, Switzerland.

email:

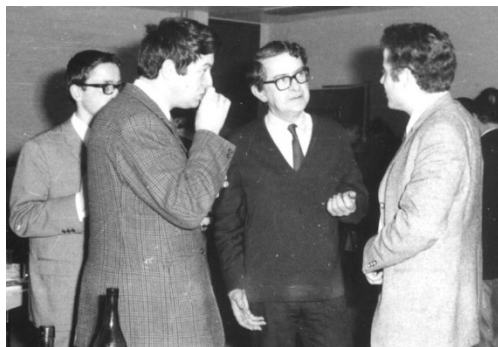
ivan.lefkovits@unibas.ch



What is your connection with the BII / The period of time you were in the BII:

Senior and Founding Scientific Member, Apr. 1969 –Jan. 2000

Some description of yourself to share:



Links: unibas.ch

[Wikipedia](#)

Name: Olli LASSILA, M.D. Ph.D.

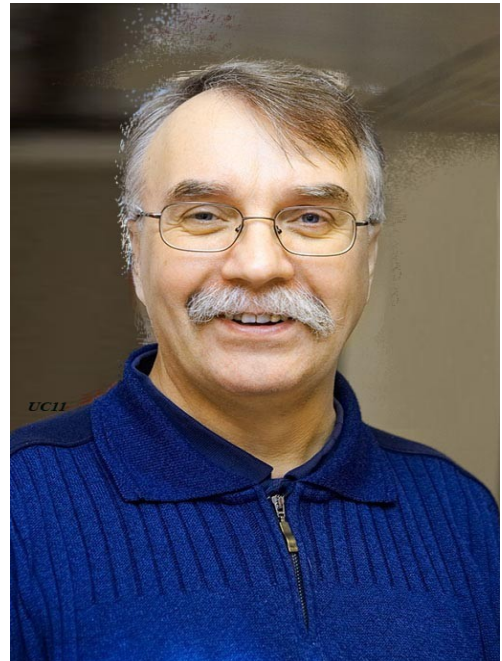
Current Institution-Affiliation-

Private Address:

Professor of Immunobiology
Department of Medical Microbiology and
Immunology, University of Turku, Kiinamyyllynkatu
13, 20520 Turku Finland

email:

olli.lassila@utu.fi



What is your connection with the BII / The

period of time you were in the BII:

Scientific Member October 1982- August 1988

Some description of yourself to share:

Currently we are working on the transcriptional control of plasma cell differentiation using DT40 model. We made DT40 mutants for transcription factors like ikaros, aiolos, helios, pax-5, bcl6, irf4 and irf8. Available resources have been obtained from EU and Academy of Finland.

2007-2009 I was a Vice Dean in the Medical faculty of University of Turku.

Name: Tomas LEANDERSON, Ph.D.

Current Institution-Affiliation-Private Address:

Professor, Immunology group, Lund University, BMC D14, 21114 Lund, Sweden

email:

tomas.leanderson@med.lu.se

**What is your connection with the BII / The
period of time you were in the BII:**

Scientific Member 1983-1986

Some description of yourself to share:

Professor of immunology at Lund University since 1990.

CSO of a biotech company (Active Biotech) since 1999 and CEO since 2008.

Married and remarried; 4 children.

Current research interest: Regulation of immunity in autoimmunity and cancer.

Name: Charles MACKAY, Ph.D.

Current Institution-Affiliation-Private Address:

School of Biological Sciences
Faculty of Medicine, Nursing and Health Services
Monash University, Australia

SPRF (Honorary)
Garvan Institute for Medical Research, Australia

Tel.: +61 3 99029510

Email:

c.mackay@me.com

**What is your connection with the BII / The
period of time you were in the BII:**

Scientific Member 1987-1989

Some description of yourself to share:

Professor

Please see PUBMED for **publication** list.

Name: Kenneth B. MARCU Ph.D.

Current Institution-Affiliation- Private Address:

1.^o Affiliation:

Professor Emeritus (Depts of Biochemistry and Pathology) Stony Brook University, Stony Brook, NY, USA

2.^o Affiliations:

Foreign Member, BRI FORTH Institute, Ioannina Medical School, Ioannina, Greece. University Affiliated Professor, BRFAA Research Institute, Athens, Greece

Adjunct Professor of Biology, San Diego State Univ. San Diego, CA, USA

Home Address: Via Del Gomito 24/14, Bologna 40127, Italy

email:

Kenneth.marcu@stonybrook.edu



What is your connection with the BII / The period of time you were in the BII:

Scientific Member, September 1983-August 1984

I was a member of BII for 1 year, when I was on my first sabbatical leave from Stony Brook University, between Sept 1983 and August 1984. At the BII I worked together with members of George Koehler's group (particularly Andre Trauneker). My daughter Ellie was in kinder garden way back then and now will soon be celebrating the High School graduation of her own 18 year old daughter Malayna.

Some description of yourself to share:

On January 1, 2016, I officially retired from my academic position at Stony Brook University where I was a Professor in the Depts of Biochemistry and Cell Biology and Pathology since 1978. In my retirement, I only reside at our family home in Bologna, Italy. I continue to work on aspects of some of the original research projects that I had established over a 25 year time span on the differential functions and mechanisms of action of IKK α and IKK β (inhibitor of NF- κ B kinases alpha and beta) in the regulation of pro-inflammatory stress-like responses, the growth and normal vs. neoplastic cells and aspects of altered chondrocyte physiology that impact on osteoarthritic disease. However, my roles in these projects is now mostly in an intellectual and advisory capacity to assist my younger colleagues with the original still on-going research projects that I had helped them all establish.

Some of our more recent publications include

(1) Culley, K.L. et al. Lessard, S.G., Green, J.D., Quinn J., Chang, J., Tyler Khilnani T., (2019).

Inducible knockout of CHUK/IKK α in adult chondrocytes reduces progression of cartilage degradation in a surgical model of osteoarthritis. Nature Scientific Reports 9 (1): 6905.

(2) Markopoulos, G.S. et. al. (2019). Epigenetic Regulation of Inflammatory Cytokine-Induced Epithelial-To Mesenchymal Cell Transition and Cancer Stem Cell Generation. Cells 8 (10): 1143 (doi:10.3390/cells8101143).

(3) Chavdoula, E., et al. (2019) CHUK/IKK α loss in lung epithelial cells enhances NSCLC growth associated with HIF up-regulation. LSA 2 (6) (DOI 10.26508/lsa.201900460).

Name: Wolfgang Richard MAYR, M.D.

Current Institution-Affiliation-

Private Address:

Professor emeritus

Department for Blood Group Serology and Transfusion Medicine, Medical University of Vienna,
Währinger Gürtel 18-20, A-1090 Wien, Austria

email:

wolfgang.mayr@meduniwien.ac.at



How is your connection with BII / The period of time you were in BII:

Scientific Member

June 1, 1972 – May 31, 1973 on human immunogenetics

Some description of yourself to share:

Born on 29.07.1944 in Vienna (Austria); nationality: Austrian, *Qualifications as medical specialist:* blood group serology, transfusion medicine and immunology

Docentships for blood group serology (1974), immunology (1984) and transfusion medicine (1986)

After BII

- 01.07.1973 – 30.11.1986: assistant professor (until 13.02.1974), then associate professor, Institute for Blood Group Serology, University of Vienna

- 01.12.1986 – 30.09.1992: Director, Institute for Transfusion Medicine, RWTH Aachen, Germany

- 01.10.1992 – 31.12.2009: Director of the Division of Blood Group Serology and Chairman, Department of Blood Group Serology and Transfusion Medicine, University of Vienna / Medical University of Vienna

- 01.01.1994 – 31.03.2005: Medical Director, Blood Donation Center for Wien, Niederösterreich and Burgenland, Austrian Red Cross

- from 01.04.2005: Medical Councillor for Transfusion Medicine, Austrian Red Cross

- from 01.01.2010 to 30.09.2012: Director, Department for Blood Group Serology and Transfusion Medicine, Medical University of Vienna

Scientific work: > 590 publications on the following topics: transfusion medicine, blood group serology, immuno-hematology, immunogenetics, transplantation immunology and HLA.

Editor-in-Chief of Vox Sanguinis (from 2003; 1977-2003: editor of Section III – Genetic markers of human blood); member of the editorial board of Human Immunology, Forensic Sciences

International: Genetics, and Minerva Biotechnologica. Councillor of the International Histocompatibility Workshops and Member of the HLA Nomenclature Committee, Organiser of the 26th Congress of the International Society of Blood Transfusion 2000 in Vienna / Austria, Dr. med honoris causa, University of Olomouc / Czechia (1994)

Name: Kazuo OHNISHI, Ph.D. _

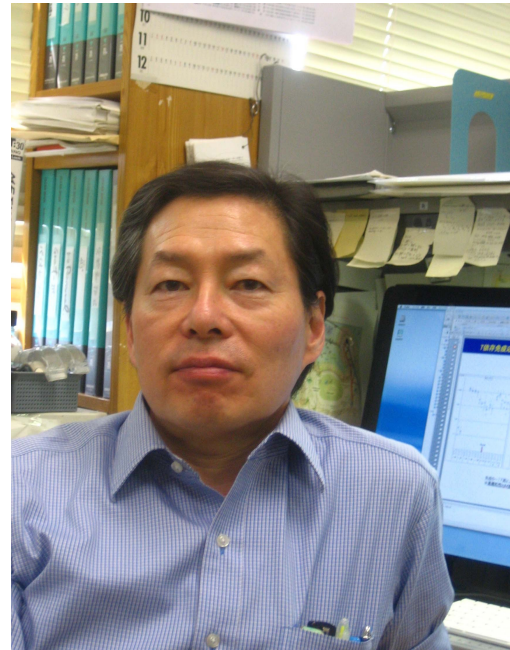
Current Institution-Affiliation-

Private Address:

Senior Scientist
Department of Immunology
National Institute of Infectious Diseases (NIID)
(Professor, The University of Tsukuba, Cooperative
Graduate School)
1-23-1 Toyama, Shinjuku-ku, 162-8640 Tokyo, Japan
Tel.: +81-3-5285-1111 (Operator)
+81-3-4582-2713 (Direct)
Fax: +81-3-5285-1156

email:

ohnishik@nih.go.jp



**What is your connection with the BII / The
period of time you were in the BII:**

Scientific Member 1993 –1995, 1996 – 1999

Some description of yourself to share:

Current research subjects:

- 1) Immunological detection of newly emerging infectious diseases;
Establishment and characterization of monoclonal antibodies against SARS coronavirus.
Methods Mol. Biol. 454:191-203 (2008)
Severe acute respiratory syndrome (SARS) coronavirus: application of monoclonal
antibodies and development of an effective vaccine Rev. Med. Virol., 16:117-131 (2006)
- 2) Biology of Lymphocyte-cadherin (BILL-cadherin/Cdh-17);
Lymphocyte-expressed BILL-cadherin/cadherin-17 contributes to the development of B
cells at two stages, Eur. J. Immunol., 35:957-963 (2005)
The identification of a nonclassical cadherin expressed during B cell development and its
interaction with surrogate light chain. J. Biol. Chem., 275:31134-31144 (2000)
- 3) Function of PreBCR;
The nonimmunoglobulin portion of δ 5 mediates cell-autonomous pre-B cell receptor
signaling. Nature Immunol., 4:817-819 (2003)
Molecular components and assembly of δ -surrogate light chain complexes in pre-B cell
lines. J. Biol. Chem., 269:28347-53 (1994)

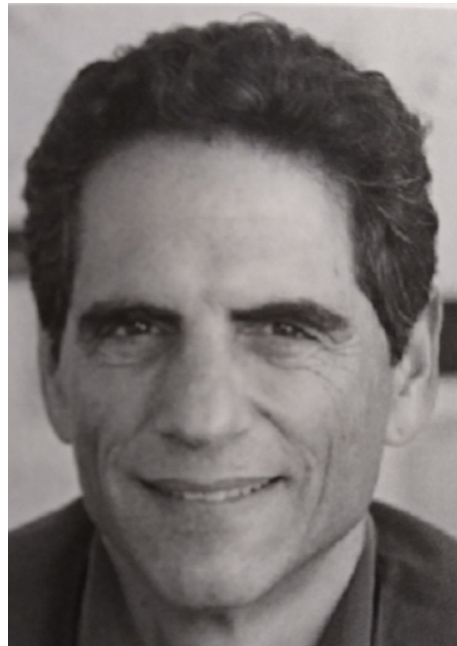
Name: Ed PALMER, M.D., Ph.D.

Current Institution-Affiliation- Private Address:

Professor Emeritus
of the Transplantation Immunology and Nephrology in Departement Forschung,
Kantonsspital Basel, 4031 Basel, Switzerland

email:

ed.palmer@unibas.ch



What is your connection with the BII / The period of time you were in the BII:

Senior Scientific Member, 1993-2001

Some description of yourself to share:

Links: unib.ch

Name: Jean PIETERS, Ph.D.

Current Institution-Affiliation- Private Address:

Professor of the Biozentrum at the University of Basel,
Klingelbergstrasse 70,
4051 [Basel, Switzerland](#)

email:

jean.pieters@unibas.ch



What is your connection with the BII / The period of time you were in the BII:

Scientific Member 1996-2000

Some description of yourself to share:

2002-current as professor of Biochemistry at the Biozentrum of the University of Basel.

Links: unib.ch

Name: J. Richard PINK, Ph.D.

Current Institution-Affiliation-Private Address:

Chemin de la Cure 25, CH-1008 Prilly, Switzerland

email:

pinkr@mail.com



What is your connection with the BII / The period of time you were in the BII:

Scientific Member 1971-1977, 1981-1984

Some description of yourself to share:

Born and educated in Northern Ireland, UK. Married, three children.

Graduated from Cambridge University, UK (BA 1965; PhD in Biochemistry 1968, for work done with C. Milstein at the Laboratory of Molecular Biology, Cambridge, on sequences of human immunoglobulins).

Postgraduate research work: on schistosomiasis in wild baboons, (Serengeti, Tanzania, 1965); structures of immunoglobulins (University of California, San Francisco, 1969-71).

Member BII 1971-77: characterized avian major histocompatibility antigens (with V. Miggiano, A. Ziegler, H. Huser, A. Buder and others).

University of Geneva 1977-81: glycosylation of membrane proteins.

Member BII 1981-84: characterized lymphocyte precursors in chick embryos (with O. Vainio, O. Lassila, M. Ratcliffe, J-C Weill, A-M Rijnbeek and others)

Hoffmann-La Roche AG, Basel (1984-93): participated in and then managed preclinical malaria vaccine development; (1994-98) work on gene therapy in neurobiological models.

Freelance consultant and medical writer (1998-), and staff member of WHO's Tropical Disease Research Unit (TDR) (1999-2004): helped to organize compound acquisition for TDR's programme of high-throughput compound screening for potential anti-parasite activity.

Name: Hans-Georg RAMMENSEE, Ph.D.

Current Institution-Affiliation- Private Address:

Professor of the University of Tübingen Interfaculty Institute for Cell Biology Department of Immunology, Auf der Morgenstelle 15, Verfügungsgebäude D-72076 Tübingen, Germany

Tel: +49-7071-29 87628

www.immunology-tuebingen.de

email:

rammensee@uni-tuebingen.de



What is your connection with the BII / The period of time you were in the BII:

Scientific Member 1985-1987.

Some description of yourself to share:

1996 - current as professor of at the University of Tübingen and chair of the Department of Immunology at the Institute for Cell Biology.

Wikipedia

Name: Hansruedy RAMSEIER, Ph.D.

Current Institution-Affiliation-Private Address:

Grossplatzstrasse 12, CH-8118 Pfaffhausen, Switzerland

Email:

pfopf-hp-h.ramseier@ggaweb.ch

**What is your connection with the BII / The
period of time you were in the BII:**

Scientific Member 1971-1973

Some description of yourself to share:

Professor Emeritus

Please see PUBMED for publication list

Name: Claude-Agnes REYNAUD, Ph.D.

Current Institution-Affiliation- Private Address:

Group leader

"Team Development of the immune system", Institut Necker-Enfants Malades - Faculté de Médecine Paris Descartes, INSERM U1151-CNRS UMR8253, and
Université Paris Descartes, Faculté de Médecine– Site Broussais – CS61431 - 14 rue Maria Helena Vieira Da Silva –75993 PARIS CEDEX 14, France

Tel: + 33 1 72 60 64 48

email:

claude-agnes.reynaud@inserm.fr



What is your connection with the BII / The period of time you were in the BII:

Scientific Member, June 1981- October 1987

Some description of yourself to share:

Links: INSERM

Name: Walter F. RIESEN, Ph.D, M.D. hon

Current Institution-Affiliation-

Private Address:

Hintergasse 65, CH-8253 Diessenhofen,
Switzerland

email:

wf.riesen@bluewin.ch



What is your connection with the BII /

The period of time you were in the BII:

Scientific Member 1974-1976, Advisor 1980-1992

Some description of yourself to share:

Professor Emeritus, Cofounder of Medinfo edition, Editor of info@herz+gefäss

See PUBMED for publication list

Name: Nobuo SAKAGUCHI, M.D., Ph.D.

Institution-Affiliation-

Private Address:

Professor

Department of Immunology, Graduate School
of Medical Sciences, Kumamoto University
1-1-1, Honjo, Kumamoto 860-8556, Japan
Tel.: +81-96-373-5134
Fax: +81-96-373-5138

email:

nobusaka@kumamoto-u.ac.jp

nobuosakaguchi@gmail.com



What is your connection with the BII / The period of time you were in the BII:

Scientific Member 1. October 1983– 30. September 1986

Some description of yourself to share:

I experienced many things during my stay at the BII.

During this period, there was a fire accident, and every member worked hard for the reconstruction of the house. I was sticking to the lab to characterize the Lamda 5 cDNA. I was impressed that a bearded man worked so hard for the reconstruction of the house (to support the members) by pushing the cart in the garage underground day and night.

Especially, he helped me a lot for the laboratory setting. I miss him.

I am still studying the maturation of B-cells. The molecular mechanism for generation of high-affinity antibody is a big issue in immunology.

Please keep watching it, Charley! Thank you.

Name: Mariolina (Mao) SALIO, M.D.

Current Institution-Affiliation-

Private Address:

Clinical Research Fellow

MRC Human Immunology Unit, Radcliffe Department of Medicine

John Radcliffe Hospital, Headington, Oxford, OX3 9DS, UK

Tel: +44 1865 222341/413

email:

Mariolina.salio@imm.ox.ac.uk

Skype: mariolinasalio. Twitter @maosalio



What is your connection with the BII / The period of time you were in the BII:

Visiting Scientist in the laboratory of Antonio Lanzavecchia, January 1996-October 1999, with a Fellowship from the European Community (EUNIDI network), working on Dendritic Cells biology.

Some description of yourself to share:

Working with Antonio at the BII, I developed a strong interest in the cross talk between innate and adaptive immunity, which subsequently led me to focus on unconventional T cells, CD1d and MR1 restricted, namely iNKT cells and MAIT cells. My goal is to manipulate and harness this monomorphic antigen recognition system to improve antigen specific adaptive immunity and enhance immune responses in cancer and infections. I also have a particular interest in leveraging multiparameter high end cytometry data to understand immunological signatures predictive of response in cancer patients treated with immunomodulating agents.

ORCID [0000-0002-4821-380](https://orcid.org/0000-0002-4821-380)



at jitsi video conference, 10th 06. 2021

Name: Richard H. SCHEUERMANN, Ph.D.

Current Institution-Affiliation- Private Address:

Director of Informatics, Director of La Jolla Campus of the J. Craig Venter Institute and Adjunct Professor of Pathology at U.C. San Diego, California, USA.

Address: 4120 Capricorn Lane, La Jolla, CA, 92037 USA

Tel: +1 858-200-1876

Private address: 5424 Caminito Bayo, La Jolla, CA 92037 USA

Email:

rscheuermann@jcv.org



What is your connection with the BII / The period of time you were in the BII:

Scientific Member, 1986 - 1992

Some description of yourself to share:

After leaving the BII in 1992 I joined the faculty in the Department of Pathology at U.T. Southwestern Medical Center in Dallas Texas where I continued my research of transcription regulation and signal transduction in B cells. In 2001, I shifted my career focus to computational biology following a sabbatical at the San Diego Supercomputer Center. In 2012 I joined the J. Craig Venter Institute in La Jolla, CA as the Director of Informatics. Over the years, my group has developed several computational tools for the analysis of flow cytometry data, including FLOCK (PMID:20839340) and DAFi (PMID:29665244), and database and analysis resources, including ImmPort (www.immport.org), the Influenza Research Database (www.fludb.org) and the Virus Pathogen Resource (www.viprbrc.org) for the US National Institute of Allergy and Infectious Diseases. We have been using these tools and database resources to monitor the evolution of SARS-CoV-2 and evaluate the B cell and T cell responses to infection and vaccination. More recently, we have also developed a series of machine learning and statistical analysis tools to analyze single cell RNA sequencing data, including NS-Forest (<https://www.biorxiv.org/content/10.1101/2020.09.23.308932v1>) and FR-Match (PMID:33249453), and applied these methods to characterize the cellular diversity of neuron in human and mouse brain (PMID:31435019).

During my travels, I've had a chance to run into a few BII alum over the years: visited with Klaus KARJALAINEN in Singapore, Ramie LEIBNITZ in Paris and Lausanne, Beat IMHOF in Geneva, and Antonio LANZAVECCHIA and David NEMAZEE in San Diego.

Name: Marc SHULMAN, Ph.D.

Current Institution-Affiliation- Private Address:

Professor Emeritus

Department of Immunology, University of Toronto, Toronto, Canada

Member, Marine Biological Laboratory, Woods Hole, MA, USA

Tel: +1 508 444 8892

email:

marc.shulman@gmail.com



What is your connection with the BII / The period of time you were in the BII:

Scientific Member, 1976-1979

Some description of yourself to share:

After my three years at BII, I moved in 1979 to the University of Toronto, where I spent the next 28 years. My work in Toronto stemmed directly from projects and friendships that were initiated at BII. Georges Köhler and I had developed a method of selecting mutant hybridoma cells with defects in IgM production or function, and these mutants led in diverse directions. Nobu Hozumi had also landed in Toronto shortly before me, and together we undertook to analyze both expression-defective mutants, which revealed a class of active mammalian transposons, and structural mutants, which identified IgM features involved in complement activation and IgM assembly. We also used the null mutants to develop techniques for expressing Ig genes in culture. This simple advance enabled another level of investigation, including production and characterization of human/mouse chimeric antibodies. The current state of antibody technology leaves our old accomplishments in the dust of history, but I explain to my friends that my major accomplishment was to demonstrate how easy it is to make any antibody whatsoever, and that I left to the next generation the hard work of figuring out the right antibodies to make. When I retired in 2007, I abandoned two projects -- the physiological significance of J chain-deficient hexameric and pentameric IgM and the molecular action of the transcriptional enhancer. It might be that these two questions are no closer to an answer than when I left.

Post-retirement, I occasionally attend meetings on hobby topics -- epigenetic inheritance and immunotherapy -- but it is a stretch. For the past few years, I have overseen a summer lecture program focused on the Middle East (see photo and www.meff.world). My wife, Peggy, and I split our year between Woods Hole, MA in the warm months, and Culebra, Puerto Rico, when the weather grows colder. Age is taking its toll: I upgraded to an electric, pedal-assist bicycle, and I am looking to replace my monohull with a small catamaran. .

Name: Uwe STAERZ M.D., Ph.D.

Current Institution-Affiliation- Private Address:

Chief Scientific Officer, Chairman of the Board at Isogenis, Inc.

Denver, Colorado, USA

and

Department of Medicine, National Jewish Medical and Research Center

1400 Jackson Street, Denver, CO 80206 USA

Telephone: +1 303-398-1767

private email:

ustaerz@greffex.com



What is your connection with the BII / The period of time you were in the BII:

Scientific Member, 1986-1991

Some description of yourself to share:

T lymphocytes play a central in the defense against infectious challenges and possible cancerous growths.

atopicderm.org/faculty/staerz.html

Name: Charles SIDMAN, Ph.D.

Current Institution-Affiliation-

Private Address:

ECS Capital Partners, LLC,
PO Box 200, Bar Harbor, ME 04609,
USA

email:

csidman@ecs-partners.com



**What is your connection with the BII / The
period of time you were in the BII:**

Scientific Member 1978-1983

Some description of yourself to share:

Since BII I have spent 10 years as a Staff Scientist at The Jackson Laboratory in Bar Harbor, Maine, 19 years as a Professor of Molecular Genetics, Biochemistry and Microbiology, and of Business, at the University of Cincinnati in Cincinnati, Ohio, and now am active in Angel investment circles and run a Venture Fund operating nationally and worldwide.

My wife Amy and I celebrate our 51st anniversary this year, and our two children Alfred and Elanor (whom many of you knew) are both wonderful adults, happily married and well launched.

I look forward to seeing again many people who were so important and enjoyable for us during and after our Basel years.



at jitsi video conference 10th.06.2021

Name: Hans-Joachim WALLNY, Ph.D.

Current Institution-Affiliation-

Private Address:

Novartis Pharma AG
Technical Research and Development
Technical Project Leader
Forum-1
CH-4002 Basel, Switzerland
Tel.: +41 61 324 7383,
mobile +41 49 572 2547

email:

Hans-Joachim.wallny@novartis.com

private email:

hjwallny@aol.com



What is your connection with the BII / The period of time you were in the BII:

Scientific Member May 1992 - January 1995, worked with Klaus Karjalainen, Jim Kaufman and Stephane Demotz.

Some description of yourself to share:

I work in Biotechnology drug development and am an internationally recognized expert in the field of potency assay for quality control purposes for biotech drugs.

I work also on a stem cell therapeutic.

Married, 2 kids, live in Grenzach Wyhlen, Germany

Name: Jean-Claude WEILL, Ph.D., Med. Doc. of Dentistry

Current Institution-Affiliation- Private Address:

Professor Emeritus

of Immunology at the Faculty of Medicine at Université Paris Descartes,
and Immunology at the Necker Hospital (Hôpital Necker), Paris, France

Institut National de la Santé et de la Recherche Médicale Unité 783 “Développement du système immunitaire”, Université Paris Descartes, Faculté de Médecine - Site Necker-Enfants Malades, Paris, France

email:

jean-claude.weill@inserm.fr



What is your connection with the BII / The period of time you were in the BII:

Senior Scientific Member, 1987-1991

Some description of yourself to share:

Links: INSERM

Name: Melanie WILSON, Ph.D.

Current Institution-Affiliation-Private Address:

Professor
Department of Microbiology
University of Mississippi Medical Center
Jackson, Mississippi 3921 USA

email:

mwilson@umc.edu

What is your connection with the BII / The

period of time you were in the BII:

Scientific Member 1988-1992, with Louis Du Pasquier

Some description of yourself to share:

Dr. Melanie Wilson is a Professor in the Department of Microbiology at the University Mississippi Medical Center (UMMC). Melanie received her Ph.D. in Biochemistry and Molecular Biology from the Medical University of South Carolina in 1987 and was a Scientific Member at the Basel Institute for Immunology from 1989-1992. She joined the faculty at UMMC in 1992. At UMMC she is a lecturer for medical and dental immunology courses and serves as course director for the Graduate Immunology Course.

Her research interest is in the evolution of the immune system, specifically the structure and function of B and T cell receptors, Fc-receptors, antigen receptor signaling and their gene regulation. For the past 25 years Melanie has been working with the channel catfish model system and she and her collaborators at UMMC have established a catfish leukocyte culture system and developed clonal catfish B, T, NK and macrophage cell lines. She is the author of more than 95 peer-reviewed publications.

Name: Thomas WINKLER, Ph.D.

Current Institution-Affiliation- Private Address:

Professor
of Genetics at the Nikolaus-Fiebinger Centre for Molecular Medicine,
University of Erlangen-Nuremberg, Germany

Tel: +49 9131 85-29136

email:

thomas.winkler@fau.de



What is your connection with the BII / The period of time you were in the BII:

Scientific Member, 1988-1990

Some description of yourself to share:

Links: Uni Erlangen

Name: Gillian WU, Ph.D.

Current Institution-Affiliation- Private Address:

Professor Emeritus
of the Department of Biology, Faculty of Science, York University, Toronto, Canada

email:

gillwu@yorku.ca



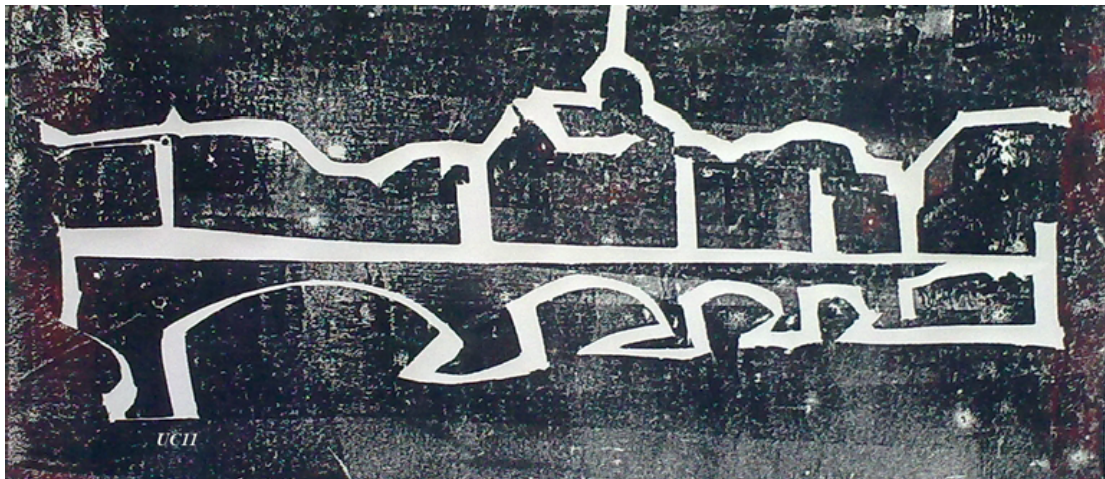
What is your connection with the BII / The period of time you were in the BII:

Scientific Member, 1980-1985

Some description of yourself to share:

Links: [york uni](#)

Students



Hochdruck / Highprint

Name: Tilman BORGGREFE, Ph.D.

Current Institution-Affiliation-Private Address:

Professor, Institute of Biochemistry, Justus-Liebig University, Friedrichstrasse 24, D-35392 Giessen, Germany

Tel. +49-641-99-47400

email:

tilman.borggrefe@biochemie.med.uni-giessen.de



What is your connection with the BII / The period of time you were in the BII:

Summer Student 1993, Ph.D. Student 1994-1998

Some description of yourself to share:

I joined the BII as summer student (1993) and subsequently as a Ph.D.-student (1994-98) in Rolf Jessberger's lab working on class switch recombination. After a postdoc in Roger Kornberg's lab at Stanford University, I was at the University of Ulm (Immunology Department; head: Hans-Reimer Rodewald) and subsequently at the Max-Planck Institute for Immuno-biology and Epigenetics as a group leader (2005-2012). In 2012 I took the position as professor for biochemistry at the Justus-Liebig-University in Giessen.

My working group is interested in molecular mechanisms of signal transduction, chromatin/transcription. We take the Notch signal transduction pathway as our model system to identify and characterize key players that control Notch response.

Name: Paolo GHIA, M.D. Ph.D.

Current Institution-Affiliation-

Private Address:

Università Vita-Salute San Raffaele, Via
Olgettina 58, I-20132 Milano, Italy

email:

ghia.paol@hsr.it



What is your connection with the BII / The

period of time you were in the BII:

Ph.D. Student 1. January 1993 – 31. March 1996

Some description of yourself to share:

Paolo Ghia received his MD from the University of Torino, Italy, followed by a residency in Internal Medicine. He received his PhD working at the Basel Institute for Immunology in Basel, Switzerland, in the lab of Fritz Melchers and Ton Rolink where he studied the development of normal human B lymphocytes. He moved to the Dana-Farber Cancer Institute, Harvard Medical School, in Boston where he studied the molecular mechanisms responsible for the pathogenesis of chronic lympho-proliferative disorders, and in particular of Follicular Lymphoma, aiming at transferring his immunological knowledge into the hematological arena.

He is now working in Milano, as Associate Professor of Internal Medicine at the Università Vita-Salute San Raffaele, as Scientific Coordinator of the Lymphoma Unit, Department of Onco-Hematology, and Head of the Laboratory of B Cell Neoplasia, Division of Molecular Oncology, at the San Raffaele Scientific Institute.

His research interest is the study of the molecular and cellular mechanisms, including the role of antigenic stimulation and immunoglobulin features, responsible for the onset of indolent lymphomas and in particular of Chronic Lymphocytic Leukemia (CLL). More recently, he focused his research on the newly defined clinical entity named Monoclonal B Lymphocytosis (MBL) and its relationship with leukemic transformation. On these topics he published over 90 manuscripts in peer-reviewed journals.

He is a member of the board of the European Research Initiative on CLL (ERIC), where he acts as coordinator of the scientific projects. He is also a member, as lymphoma expert, of the Scientific Programme Committee of the European Hematology Association (EHA). He is Section Editor for CLL and B-cell malignancies of the NPG journal "Leukemia".

Name: Hans-Martin JÄCK, Ph.D.

Current Institution-Affiliation-

Private Address:

Division of Molecular Immunology
Nikolaus-Fiebiger-Zentrum
University of Erlangen-Nürnberg
Gluckstrasse 6 D-91054 Erlangen, Germany
Tel: +49-9131-8535912
Fax: +49-9131-8539343

e-mail:

hjaeck@molmed.uni-erlangen.de
www.molim.uni-erlangen.de,
www.lymphozyten.de

Damaschkestr. 63
D-91088 Bubenreuth, Germany

private email:

hjaeck@gmail.com



What is your connection with the BII / The period of time you were in the BII:

Ph.D. Student 1984 with Matthias Wabl

Some description of yourself to share:

Hans-Martin received his doctoral training in Tübingen, the Basel Institute for Immunology and the University of California at San Francisco. After obtaining his Ph.D. in 1988 from the University of Tübingen, he worked for 2 years as a postdoctoral fellow at UC San Francisco in the lab of Matthias Wabl and for 6 years as Assistant and Associate Professor at the Loyola University of Chicago's Medical School. In 1998 he moved to Erlangen to head the Division of Molecular Immunology.

His research aims to elucidate the molecular mechanisms that control the development of mature B cells into effector cells (memory B- and plasma cells). In particular, he wants to understand the physiological and pathologic functions of small regulatory micro-RNAs (miRNA) during the adaptive humoral immune response and the pathogenesis of autoimmune diseases and multiple myeloma.

Name: Jörg KIRBERG, Ph.D.

Current Institution-Affiliation- Private Address:

Scientist

Morphology Section, Division of Immunology, Research Team of Professor Ger van Zandbergen,
at Paul-Ehrlich-Institute, Paul-Ehrlich-Str. 51-59 · D-63225 Langen (Hessen)
Germany

Tel: +49 6103 77 2051

email:

Joerg.Kirberg@pei.de

private email:

kirjo@gmx.de



What is your connection with the BII / The period of time you were in the BII:

Student in the group of Harald von Boehmer

Some description of yourself to share:

Links: PEI

Name: Elisabetta PADOVAN, Ph.D.

Current Institution-Affiliation-Private Address:

Professor

Faculdade de Medicina da Universidade de Lisboa (Lisbon, PT) and
Instituto Gulbenkian de Ciência

Antigen Presentation

Rua da Quinta Grande 6

2780-156 Oeiras, Portugal

Tel.: +351 214464647

Fax: +351214407970

www.igc.gulbenkian.pt

email:

epadovan@igc.gulbenkian.pt

**What is your connection with the BII / The
period of time you were in the BII:**

Ph.D. student 1992 – 1995 with Antonio Lanzavecchia

Some description of yourself to share:

I have a Ph.D. degree in “Molecular and Cellular Biopathology” with focus on Human Immunology. My current research interest is immune modulation.

Name: Nicole SCHMITZ, Ph.D.

Current Institution-Affiliation-

Private Address:

Senior Lab Head
Actelion Pharmaceuticals Ltd,
Gewerbstrasse 16, CH-4123 Allschwil, Basel,
Switzerland

email:

nicole.schmitz@actelion.com;
nicole.schmitz1@yahoo.com



What is your connection with the BII / The period of time you were in the BII:

Summer Student 1998, Ph.D. Student Spring 1999-2001

Some description of yourself to share:

I started as a summer student in 1998 in the group of Manfred Kopf and Martin Bachmann and did my PhD thesis in spring 1999 in the same group. After the closure of the BII, already located at the ETH Zürich, I finished my PhD in Manfred's Lab in 2003. Being back in Basel since 2009, I am still in contact with quite some BII members. Nevertheless, I would like to meet and be in contact with more "old friends" of the Institute thus looking forward to this meeting in Basel.

After a postdoc in Manfred's Lab I joined Cytos Biotechnology AG in Zürich. After five years working experience in the field of vaccine design and development at Cytos, I joined Actelion Pharmaceuticals Ltd in Basel in order to take on new challenges. Today, I am a Senior Lab Head in Immunology responsible for *in vivo* efficacy studies of our drug compounds. Although I switched from basic science into the Industry/Biotech, I never lost my passion for immunology and basic research. I am very lucky that I am still able to do my own research in our environment.

Name: Andreas ZIEGLER, Ph.D.

Current Institution-Affiliation-

Private Address:

Professor Emeritus

Institut für Immunogenetik, Charité-Universitätsmedizin Berlin, Freie Universität Berlin,
Thielallee 73, D-14195 Berlin, Germany

&

Leistikowstrasse 3, D-14050 Berlin, Germany

Tel: +49 30 450 564731

https://www.charite.de/service/pressemitteilung/artikel/detail/auch_das_huhn_weiss_sich_zu_wehren/

private address: Ziegler Biosolutions

Fahrgasse 5, D- 79761 Waldshut-Tiengen, Germany

Tel: +49-7741-969 0722

private email:

ziegler-biosolutions@gmx.de

,



What is your connection with the BII / The period of time you were in the BII:

Ph.D. Student 1973-1976

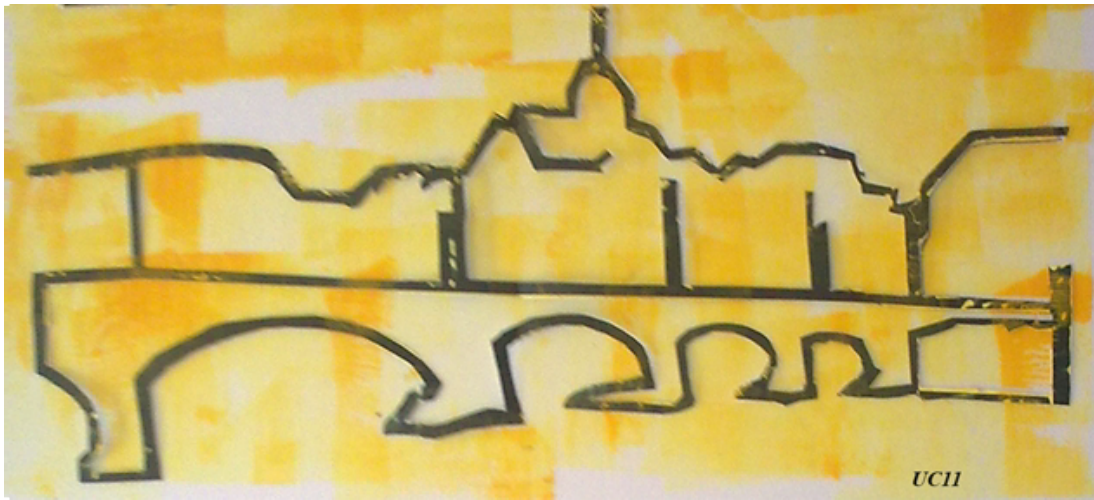
Some description of yourself to share:

Ph.D. degree at the Universität Heidelberg, Germany and then joined the MRC Laboratory of Molecular Biology in Cambridge, UK. From 1979-1988, I worked at the Universität Tübingen, Germany, from 1988-1989 at the Universität Marburg, Germany, and since 1989, I was the head of the Institut für Immunogenetik at the Charité-Universitätsmedizin Berlin, Freie Universität Berlin. I retired in 2013 and try to continue some of my work in Waldshut-Tiengen (between Basel and Schaffhouse).

Scientific interests: structure/function relationships of MHC molecules, biophysical basis of selection procedures in the immune system and in reproduction, and evolution of the extended MHC.

I have been married for 45 years; we have two sons who are both scientists. I enjoy music, visual arts, chess, and my family.

Staff



Papercutting & Painting

Name: Viviane ANQUEZ

Current Institution-Affiliation-

Private Address:

Hoffmann-La Roche AG
PCDMPA 70/332
Grenzacherstrasse
CH-4070 Basel
Switzerland

email:

viviane.unquez@roche.com



What is your connection with the BII / The period of time you were in the BII:

Laboratory Research Technician 11.1987 – 07.2002

Worked with

Dr. Weill J.C and Dr. Reynaud Cl. Agnès (1982-1991), Dr. Günthert U. (1992-1998), Dr. Rodewald H. Reimer (1998-1999), Dr. Wimmer Ch. (1999-2002); then, at Hoffmann-La Roche, Dr. Adessi C. (2003-2007), Dr. Baumann K. (since 2008)

Some description of yourself to share:

After having worked for around 20 years in the field of immunology, when the closing of BII occurred, I moved to the central nervous system and more precisely into applied research for Alzheimer's Disease.

Name: Jean-Pierre DANGY

Current Institution-Affiliation-

Private Address:

STPH Institute Socinstrasse 57, CH-4056 Basel, Switzerland

email:

jp.dangy@unibas.ch



What is your connection with the BII / The

period of time you were in the BII:

Laboratory Research Technician, September 1990 – August 2001

Some description of yourself to share:

From France, I had previous experiences at the Institut Curie and Ecole Normale Supérieure de Lyon where I graduated with a Master in Science.

I had a great time in the BII, working successively with Beat Imhof, Dominique Dunon, Thomas Goëbel and Jörg Kirberg. I am now working as a lab manager in the group of Professor Gerd Pluschke on tropical diseases such as: cerebral meningitis and Buruli ulcer

I was involved in some musical events at the Bii celebrations (Christmas dinner, Birthdays...)

I'm still playing music as my hobby in two bands

<http://www.mojo.fr>

<http://www.soulmaniacs.com>

Name: Lotte KUHN (past away, please see page 92)

Name: Rosmarie LANG

Current Institution-Affiliation-Private Address:

University of Basel, Hebelstrasse 20, CH-4031 Basel, Switzerland => Private activity

email:

r.lang@libero.it

What is your connection with the BII / The period of time you were in the BII:

Laboratory Research Technician 1974 -1980

Some description of yourself to share:

Smiling....

Name: Anne MARCUZ (born Mercier)

Current Institution-Affiliation-

Private Address:

Hoffmann-La -Roche AG, CNS department,
Grenzacherstrasse, CH 4070 Basel Switzerland

Cidex 188 - 90150 Fraix-F, France

email:

anne.marcuz@roche.com



What is your connection with the BII / The period of time you were in the BII:

Laboratory Research Technician 1992-2001, with Louis Du Pasquier.

Some description of yourself to share:

I was working on frogs, tadpoles & finally on axolotls with Ellen Hsu for 3 years, Dario Grosberger for 3 years, 6 months interim with Joseph Schwager, Melanie Wilson for 3 years, Isabelle Chretien-Brocker for 6 years and Benedict Sammut for 3 years, always with the benevolent supervision of Louis Du Pasquier.

I am a happy mother of 26 and 24 years old daughters and a 15 years old son.

My husband and I are still spending our “off-job” time in renovating our old farm into [a](#) “B & B”.

Though not sportive, I recently discover Nordic walking which I try to practice as often as possible at lunch time around the Roche area, and I enjoy long day trips in the Vosges mountains with friends and my two Bernese mountain dogs over weekends.

I am now working in the CNS (Central Nervous System) research department from Roche and get uncertain about the future at each reorientation of the projects and changes in the management. It is a quite uncomfortable position, like sitting on the fence.

I miss the time at the BII although I did not participate [in](#) all the events due to familial priority but the working conditions [w](#)here optimal in a friendly environment.

Name: Kim RÜFENACHT, B.S.

Current Institution-Affiliation- Private Address:

Founder and job coach at Aspergers at Work GmbH
Basel, Switzerland

email:

kim.ruefenacht@intergga.ch



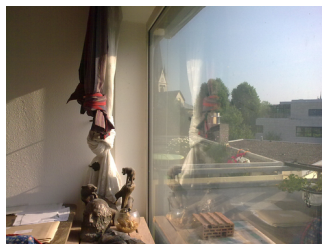
What is your connection with the BII / The period of time you were in the BII:

Administrator-Secretary, 1986-2000

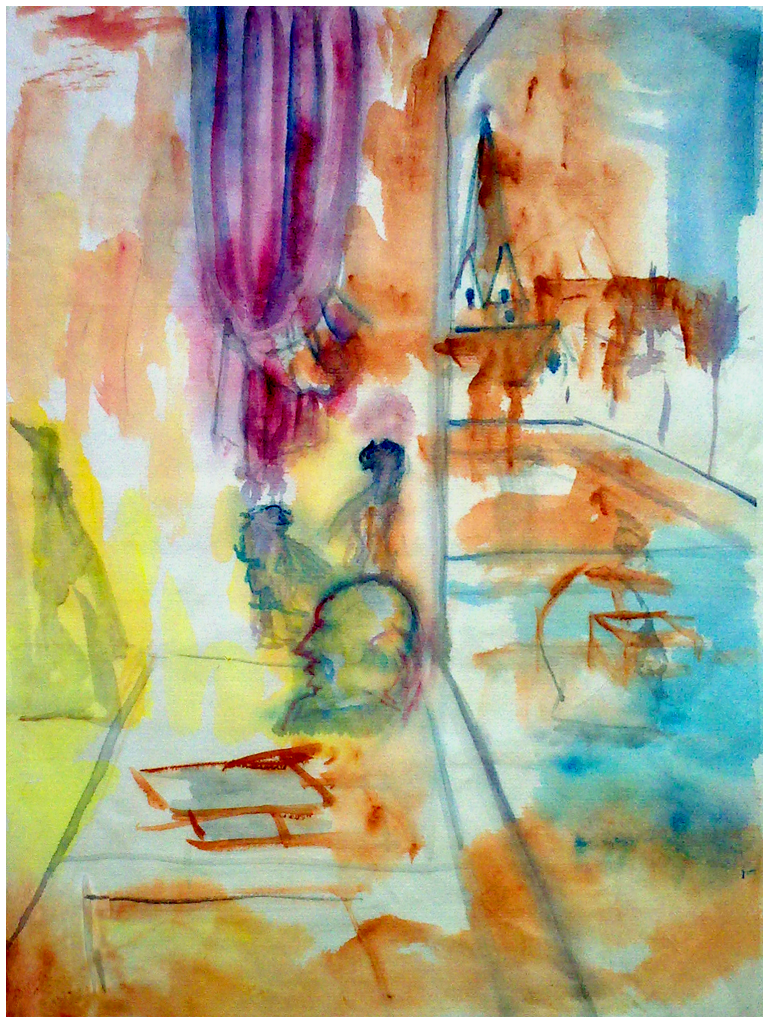
Some description of yourself to share:

Links: Aspergers at Work

Workstudy students



Charley Bronze in my room, photography



Forever Charley, Water color on Chinese paper, Size: A3

Name: Adam STEINBERG, B.S.

Current Institution-Affiliation- Private Address:

Partner / Gesellschafter, VP, Management, Elgato Systems
San Francisco, USA

Email:

Adam.Steinberg@corsair.com



**What is your connection with the BII / The
period of time you were in the BII:**

Work study to pack and distribute BII Annual Reports 1972-1994+

Some description of yourself to share:

Leo and Max will be 18 in about 2 months! We are still in SF, yes.

Visitors, Friends, & Next Generation



Forever Charley, oil painting on Leinwand, Size: A2

Name: Timm SCHROEDER, Ph.D.

Current Institution-Affiliation- Private Address:

Professor of the Department of Biosystems Science and Engineer, ETH Zürich
Mattenstrasse 26, 4058 Basel, Switzerland

Tel:+41 61 387 33 92 / 97

email:

tim.schroeder@bsse.ethz.ch



What is your connection with the BII / The period of time you were in the BII:

Through his hosts (Nishikawa SI, Honjo T) at the RIKEN who were frequent visitors of the bii, he belongs to the next generation of the bii.

Some description of yourself to share:

He did research visits at Kyoto University, Japan. He continued as a postdoc in the same institute with research visits at Kyoto and Harvard Universities. 2002 to 2004, he was an independent visiting scientist at the RIKEN Center for Developmental Biology in Kobe, Japan.

Links: ethz.ch

Name: Alan TYNDAL, M.D.

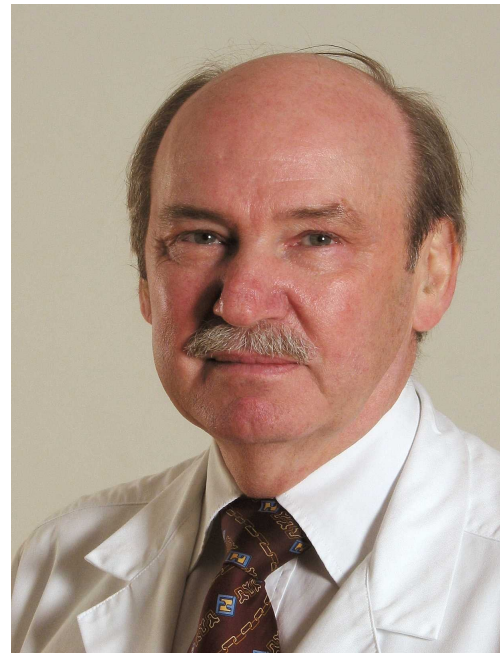
Institution-Affiliation-

Private Address:

Professor
Dept of Rheumatology
University of Basel, Switzerland
Private :
In Erlisacker 14, Bottmingen CH-4103, Switzerland

email:

alan.tyndall@fps-basel.ch



What is your connection with the BII / The period of time you were in the BII:
A friend and invited speaker

Some description of yourself to share:

Alan Tyndal is professor and head of the department of rheumatology in the University of Basel since 1991. He is a graduate from the University of Sydney, Australia and completed his clinical and research training in internal medicine and rheumatology and research in Sydney, Canberra and London.

Current special interests include hematopoietic stem cell transplantation in autoimmune diseases, mesenchymal stem cells in autoimmune disease, systemic sclerosis, infections and TNF alpha blockade and osteoporosis.

He has over 180 publications in peer reviewed journals and 20 book chapters.

He currently serves as chairman of the EULAR Scleroderma Trials and Research (EUSTAR) clinical affairs committee, the secretary of the World Scleroderma Foundation and is acting chair for two NIH safety committees for stem cell trials. He is past chairman of the European League Against Rheumatism (EULAR) Standing Committee for Clinical Affairs (ESCCA) and the autoimmune disease working party of the European Group for Blood and Marrow Transplantation (EBMT).

Pass away



Forever Charley, oil painting on Leinwand, size:115x186 cm, private collector.

Name: Roland GISLER, Ph.D.

Current Institution-Affiliation-

Private Address:

Ob dem Hügliacker 15, CH-4102 Binningen,
Switzerland

email:

roland.gisler@intergga.ch



What is your connection with the BII / The period of time you were in the BII:

Permanent Scientific Member and Head of Administration 1989-2003,
also teaching Immunology at the Biocenter of the University of Basel.

Some description of yourself to share:

Hobbies: Astrophysics, travelling, creating multimedia shows on my Mac Book Pro, Rotary, Golf

From December to May I live in Scottsdale, Arizona (8989 N Gainey Center Dr Nr104, Scottsdale, AZ 85258 USA)

Name: Charles STEINBERG, Ph.D.

Current Institution-Affiliation-Private Address:

In heaven



Clay, Collector: Roche, Basel

What is your connection with the BII / The period of time you were in the BII:

Senior Scientific Member 1971-1994, Editor of BII Annual Reports.

Some description of yourself to share:

Wikipedia

&

FOREVER Charley by Una CHEN, ispiev@gmx.de (in Appendix)

Name: Jack VON BORSTEL, Ph.D.

Current Institution-Affiliation-Private Address:

Professor Emeritus

Department of Genetics, University of Alberta, Alberta, Canada

email:

vborstel@ualberta.ca

What is your connection with the BII / The

period of time you were in the BII: Scientific Member 1981-1982, and in another later year, Visiting Scientist, summers until 1997, with Charley Steinberg

Some description of yourself to share:

Charley Steinberg and I both realized, in 1969, that The Biology Division of the Oak Ridge National Laboratory was going to lose its vitality after the Director, Alex Hollaender, retired. So, when Niels Jerne invited Charley to join the new Basel Institute for Immunology, this was a perfect solution for him, and he accepted. At the same time, I was offered a position at the University of Alberta in Canada, and I accepted.

I began coming to BII when I realized that as a geneticist, I really needed to know more about immunology. Charley Steinberg invited me to come to the BII in 1981 when I had a year's leave of absence from the University of Alberta after I completed my 10-year Chairmanship of the Department of Genetics. Charley and I had been close collaborators during the years we were in Oak Ridge. I was really glad to be where we could collaborate again.

The year in Basel was so wonderful for me that I went to the BII during summers when we were not teaching in Edmonton. Later I had another Sabbatical Leave of Absence to return to Basel for a year.

Also, I made full use of the Summer Students Program of the BII, and sent our best students from the University of Alberta to work at the BII during the summer.

In 1991, Michael Kyba worked with Antonio Lanzavecchia. In 1992, Reuben Harris worked with Antonio Lanzavecchia. In 1994, Anil Joy worked with Peter Lane. In 1995, Erika Meier worked with Louis Du Pasquier. In 1997, Michael Matic worked with Ed Palmer. In 1999, [Christopher](#) Carlson worked with Juergen Bachl.

In 1998, I sent one young man, Andre Puglesi, from Parma, Italy, to Basel (Iliana Ferrero's son). At the BII he worked with Jacob Heinz. Andre was awed with what he had learned from investigators and seminars there, and was very appreciative for the opportunity that led him to pursue further education in Switzerland and to obtain a Ph.D. in Geneva.

Name: Lotte KUHN

Current Institution-Affiliation- Private Address:

Private Address:

Alterszentrum Gellert Hof, Room 128, Gellerstrasse 138 Bethesda, Basel, Switzerland

Tel: +41 61 69 27825

She lived there until her death on 26.10.2022, age 82, in her room.



private email: lkuhn@balcab.ch

What is your connection with the BII / The period of time you were in the BII:

Laboratory Research Technician, from 1975 until 2000 with Ivan Lefkovits.

Some description of yourself to share:

Born on 27.07.1940 in Niedergösgen, Solothurn, Switzerland, studied in Gewerbeschule Bern and Solothurn, did Medizinische Laborantin Praktikum at University of Zürich with Rolf Zinkernagel, Department of Pathology, University of Zürich, for 4-5 Years. Travelled to South America, twice, with buses, sometimes alone and sometimes with friends from San Francisco whom she met there. Then worked with Ben Pernis, Department of Microbiology and Medicine, Columbia University, New York, USA. She met Richard Pink in the San Francisco Bay Area during the time he worked there. She worked 3-4 years with Leon Wofsy and Claudia Henry in the Department of Immunology, University of California at Berkeley. Claudia Henry was a postdoc of Niels Jerne at University of Pittsburgh. In 1973-1979, at University of California at Berkeley, she met Una Chen, a Ph.D. student with Robert Mishell. Then she returned to Europe, worked with Ivan Lefkovits at BII from 1975 on until the institute closed in 2000. From 2001 to 2005, she was with Jean Pieters at Biozentrum, University of Basel, until her retirement.

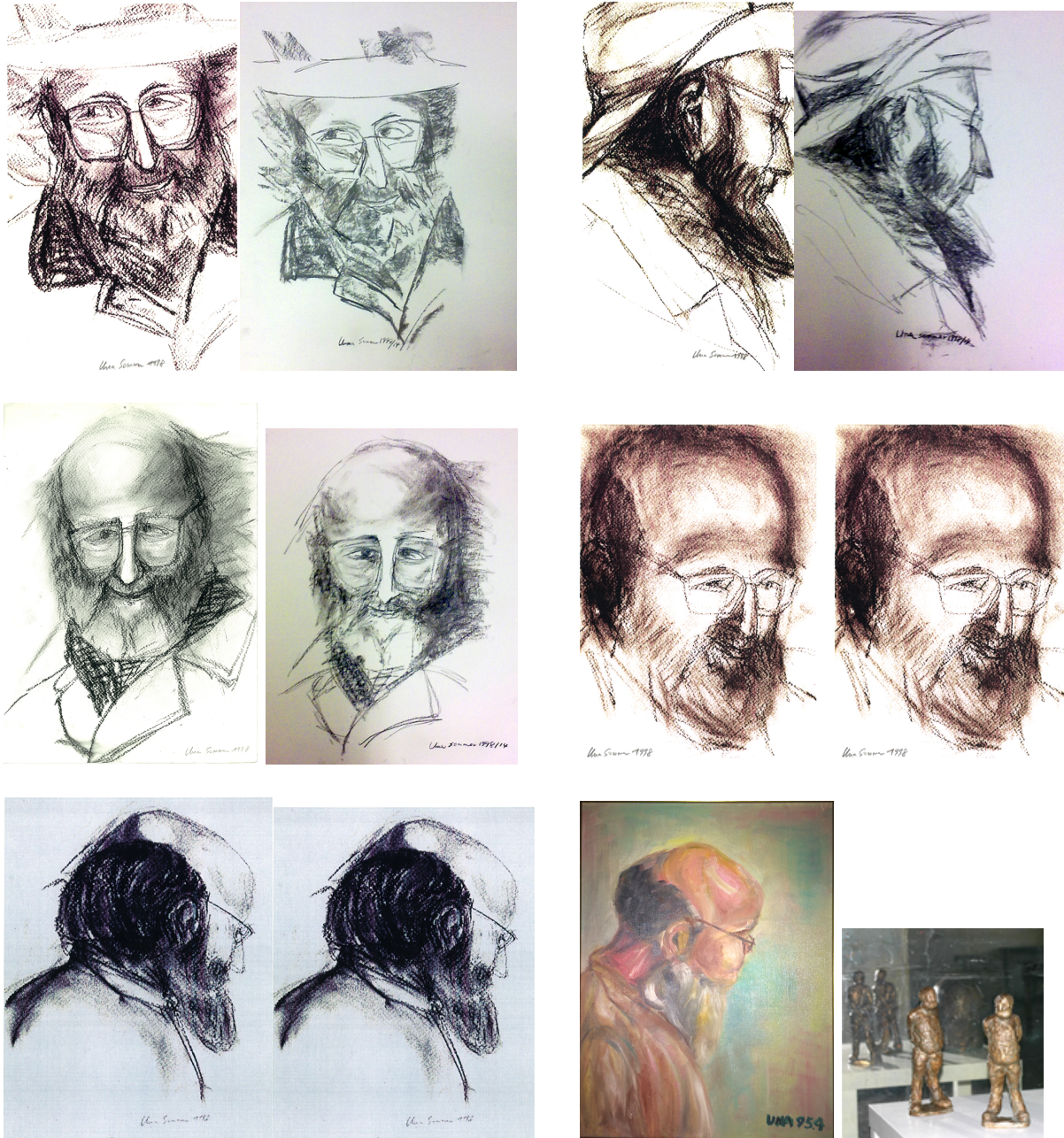
Her hobbies are travel, sky, gardening, host friends and colleagues in her roof apartment with terrace at Flora Street 25, Basel. Una stayed in her apartment 6 months in 1986 while waiting for the decision of German authorities on whether a foreigner could stay in Germany and work in Switzerland, which was against the German law.

08 1976

15.10.2022



Appendix



STEINBERG, Charley
 sketch, charcoal, A3-A4

Collector: Roche, Basel

oil painting, A3

Bronz, 7 x 10 x 28 cm

Collector: Steinberg family

Some description of your experiences at bii to share:**Forever Charley**

Name: Una CHEN, artist and scientist

email:

ispiev@gmx.de

Charley's contribution was not only the science that he performed with his hands, it was also his vision and kindness to help the young scientists who came to Basel Institute of Immunology (BII), at the personal-mankind and scientific levels. He was one of the two genius of his generation, as I was told when came to the BII. He was the editor of BII annual reports, had an overview of the activities of the entire institute.

This is my personal encounter with him:

I was born in Taiwan, completed my Bachelor degree in Medical Technology at National University of Taiwan, Then, I did my Ph.D. in Immunology at the University of California at Berkeley, including the last year shuttling to conduct a collaborate project between Berkeley and the Weizmann Institute in Rehovot, Israel. My advisor was Robert Mishell, my PhD exam chairperson was Claudia Henry, the student of Niels Jerne, the first Director of BII.

Then I did a 5 years post-doctor training in Institute of Virology and Immunology of the University of Würzburg with Eberhard Wecker and Annelies Schimpl. At that time, I had two choices: one was to accept a position at the Pathology Institute of Uni Wü, and the other was to become a scientific member of BII.

I turned down the first choice and came to BII in the summer of 1986.

Before I came, I got a telephone call from a secretary of Roche, saying that I should live in Germany and communicate to Basel Switzerland daily for the work, the so called Grenzgänger-Border commuter. I said ok, without knowing what it was all about and what I was getting into.

Well, I showed up at the BII, thought to continue my work initiated at Uni Würzburg right away. Then I got a notice from the local German authority that it is illegal for a foreigner (I hold the passport of Taiwan R.O.C.) to live in Germany and to go across the border to Basel in Switzerland to work.

The administrator of the BII, Roland Giessler, a Swiss, told me that if I did not accept the condition of being a Grenzgänger-border commuter, my contract with BII would not be valid. Fritz Melcher, the director, was not in the BII, at that summer time, as usual. And I did not know what to do.

I stayed in the apartment of Lotte Kuhn, a Swiss technician who worked with Claudia Henry in Berkeley when I was a Ph.D. student. The apartment was near Claraplatz at Basel, and I went to BII to work every day without any Swiss residency permission for 6 months. I received my salary monthly with cash, since I did not have any official written contract with BII.

It was THE top news of the BII. At the coffee break, workers would speak with me outside the terrace of the institute café, and asked me what was going on.....

So, Lotte spoke with Ivan Lefkovits, her boss at the BII, a permanent member. I went to see Ivan and told him what I was told. He said right away, the person who could help me was Charley Steinberg, a permanent member of the institute.

So, I went upstairs to Charley's room and spoke with him.

He listened quietly about my story of how I came to the BII, without a single word. At the end, he stood up and said that it was because Fritz loved me so much and wanted me to work in his group as another post-doctor, but I chose to be an independent scientific member. If I would like to stay in the institute, I should collaborate with Fritz himself.....

The story afterwards, as I was told, was:

Charley went to speak with Harald von Boehmer, another permanent member of BII about me. Harald went to press Fritz in person. Fritz finally agreed to take action, by writing a letter to the Prim-minister of Baden Württemberg, south west of Germany, where the immediate German boarder to Basel belongs to, asking for an exception to the German law:

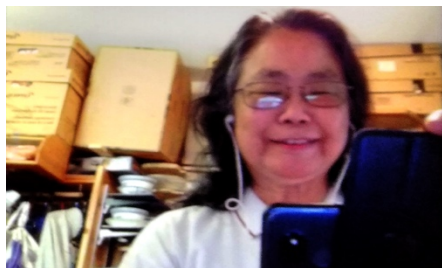
To grant me (a foreigner, holding a Taiwanese passport) to live in Germany, and to work in Basel, Switzerland (outside Germany).

It was granted.

I got the permission from the German office, brought that German document to the Swiss authority to apply for an official working permit. The Swiss officer took out my file and told me that my last application of a Grenzgänger-border commutor was expired 3 weeks after the application was submitted.

It needed to be re-applied and re-issued. If I wished I could LIVE AND WORK in Basel, Switzerland.....

In 1987, I received a notice from the Swiss authority that I should pay Swiss tax. I replied that I am a Grenzgängerin-border commutor, I pay German tax. The reply from this authority was: you have lived with Lotte Kuhn at Flora Street 25 in Basel for 6 months in 1986, you should pay Swiss tax.



Una CHEN at jitzi video conference, 10th, 06, 2021